



TECHNICAL SPECIFICATION

| | | | |
|------------------|------------------------|---------------|----------------|
| EQUIPMENT MODEL: | JJ-KCRN400-25T7M_6T20M | PROJECT NO. | OSC-8529-05-14 |
| EQUIPMENT NAME: | CT KNUCKLE BOOM CRANE | REVISION: | 1 |
| DOCUMENT NO: | KCRN400-25T7M_6T20M-TS | SHT. | 1/1 |
| | | DATE: | 18/07/2014 |
| | | PREPARED BY: | YDG |
| | | CHK'D & APP'D | CCC |

| | |
|------------------|------------------------|
| REF. GA DWG. NO. | KCRN400-25T7M_6T20M-0 |
| SERIAL NO. | OSC-8529-05-14-KCRN400 |
| QUANTITY | 1 PER SHIPSET |
| | 1(TOTAL) |

| SPECIFICATION | | MAIN HOIST | | | AUX.HOIST | |
|------------------------|--------|-------------------------|--------|-------------|------------|------------|
| | | CASE 1 | CASE 2 | CASE 3 | CASE 4 | CASE 5 |
| | | Cargo Lift | | Subsea Lift | Cargo Lift | Man-Riding |
| Dynamic factor | | 1.7 | 1.7 | 1.7 | 1.7 | 1.7 |
| Lifting capacity | Ton | 25 | 6 | 18 | 5 | 2 |
| Number of Falls | Part | 1 | 1 | 1 | 1 | 1 |
| Max. Outreach | Mtr | 7 | 20 | 7 | 20.5 | 20.5 |
| Min. Outreach | Mtr | 5 | 5 | 5 | 5.5 | 5.5 |
| Hook Speed | m/min | 15 | 15 | 30 | 15 | 40 |
| Hook Travel | Mtr | 60 | 60 | 500 | 60 | 60 |
| Luffing speed, average | Sec | 0~60 | | | | |
| Slewing Speed | RPM | 0~1.0 | | | | |
| Slewing sector | Degree | 0~360 Continuous | | | | |
| List/ Trim | Degree | 5/2 | | | | |
| Dead Weight | Ton | ~50 | | | | |
| Pedestal Height | mm | 2500 | | | | |
| Pedestal Diameter | mm | 2020 At Ship Connection | | | | |
| Design temperature | deg. | -10deg to +45deg. | | | | |

| | | |
|-------------------------|-----|---|
| ACTIVE Heave feature: | | |
| Heave period | Sec | ~ |
| Displacment | M | ~ |
| Max. compensation speed | m/s | ~ |

| | |
|---------------------------------------|--|
| CRANE POWER PACK SPECIFICATION | |
| HPU Arrangement | Built-in |
| Ship Main Supply | 415V , 50Hz , 3ph |
| Ship Aux. Supply | 230V, 50Hz, 1ph |
| Electric Motor Data | S1, Continuously |
| - Duty Class | Total : 315KW |
| - Rating | IP55 |
| - Enclosure | F |
| - Insulation class | B |
| - Temperature rise class | 110V, 60W |
| - Stand Still heater | Soft-Starter |
| - Starter | Thermic Relay |
| - Protection | |
| Control station | Control Cabin mounted on Crane Upper Column |
| <u>Other Electric Component</u> | |
| Slip Ring | Yes, |
| Horn | Yes, |
| Flood Light | ~ |
| Aircraft Warning Light | To take note 3 warning light should be installed onto the crane, free end of boom; top and bottom of operator cabin. |

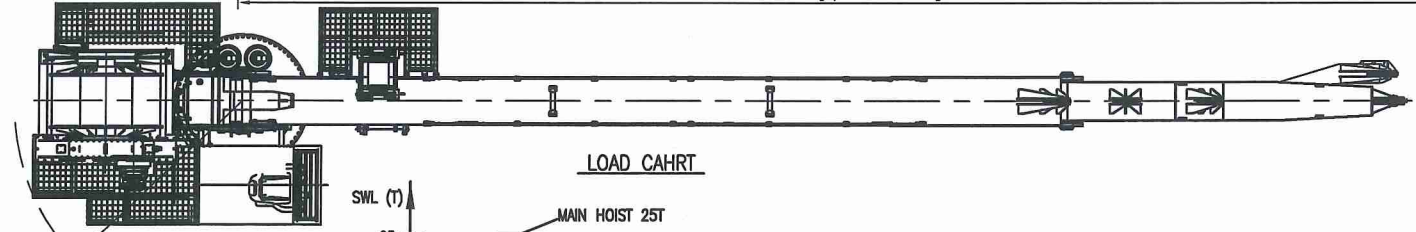
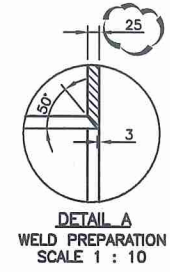
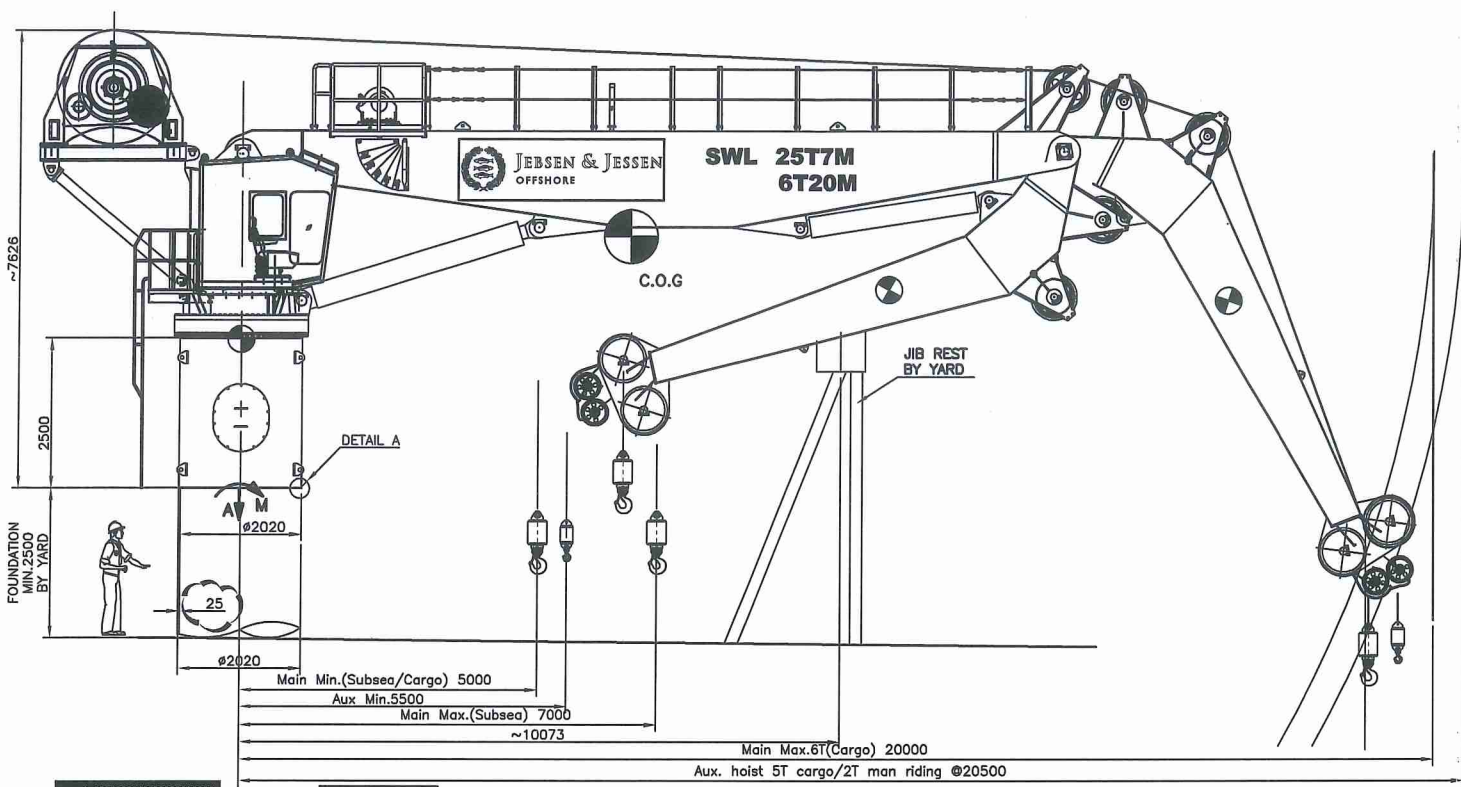
ISSUED ON
 18 JUL 2014
 For Approval

| | |
|-------------------------|-------------|
| FINISHING COLOUR | WHITE- 9003 |
|-------------------------|-------------|

| | |
|--------------|-------------------------------|
| CLASS | BV class with ALS rule+ API2C |
|--------------|-------------------------------|

| | |
|------------------------------------|------------------------|
| | Actual force, Cv=1.7 , |
| REACTION AXIAL LOAD | ~ 105T |
| REACTION OVERTURNING MOMENT | ~550TM |

Note:
 Max. reactive axial load and reaction overturning moment above includes dynamic factor , but does not include pedestal load factor PF as per API2C (7th ED)



| | | | |
|--|--|--|---------------------------------------|
| OSC-8529-05-14 | | Jebsen & Jessen Offshore Pte Ltd 11, TUAS CRESCENT, SINGAPORE 638705 Tel : (65) 67793595 FAX : (65) 67797582 | |
| PROJECT NUMBER | | THE INFORMATION CONTAINED IN THIS DRAWING IS THE SOLE PROPERTY OF JEBSEN & JESSEN OFFSHORE PTE LTD. ANY REPRODUCTION IN PART OR AS A WHOLE WITHOUT THE WRITTEN PERMISSION IS PROHIBITED. | |
| <div style="border: 1px solid blue; padding: 5px; text-align: center;"> ISSUED ON 18 JUL 2014 For Approval </div> | | TITLE : OFFSHORE KNUCKLE BOOM CRANE GENERAL ARRANGEMENT | |
| | | MODEL CODE: JJ-KCRN400-25T7M_6T20M | CHK'D & APP'D ccc |
| DRAWING NO: KCRN400-25T7M_6T20M-0 | | SCALE: 1:120 | WT. ~55 T |
| STATUS | | ALL DIMENSIONS IN MM UNLESS OTHERWISE STATED | THIRD ANGLE PROJECTION SHEET 1 / 1 |

| GENERAL TOLERANCES: ACCORDING TO ISO 2768 | | | | | | | | |
|---|----------|--------|---------|----------|----------|-----------|------------|------------|
| RANGE | >0.5-3 | >3-8 | >8-30 | >30-120 | >120-400 | >400-1000 | >1000-2000 | >2000-4000 |
| M/C | ±0.1 | ±0.1 | ±0.2 | ±0.3 | ±0.5 | ±0.8 | ±1.2 | ±2 |
| UN M/C | ±0.2 | ±0.3 | ±0.5 | ±0.8 | ±1.2 | ±2 | ±3 | ±4 |
| RANGE | UP TO 10 | >10-50 | >50-120 | >120-400 | >400 | | | |
| M/C | ±1° | ±0'30" | ±0'20" | ±0'10" | ±0'5" | | | |
| UN M/C | ±1'30" | ±1° | ±0'30" | ±0'15" | ±0'10" | | | |