

TERMINATION POINT DIAGRAM		
TP	DESCRIPTION	SIZE/RATING/MATERIAL
01	PUMP FUEL OUTLET	2" ANSI 150# RF (A182-F316/316L)
02	DISPENSER FUEL INLET	2" ANSI 150# RF (A182-F316/316L)
03	LAYDOWN SKID DRAIN	3" ANSI 150# RF A105
04	DISPENSER SKID DRAIN	2" ANSI 150# RF A105
05	INSTRUMENT AIR INLET	1/2" NPTF 316SS
06	FIRE WATER/ FOAM INLET	2" ANSI 150# RF (A182-F316/316L)
07	FIRE WATER/ FOAM INLET	2" ANSI 150# RF (A182-F316/316L)

PUMP SKID	
QTY	TWO (2)
CAPACITY	225 LPM
DISCHARGE HEAD	8.0 BAR
PUMP TYPE	API 678 PD ROTARY VANE
DRIVER	ELECTRICAL MOTOR
MOTOR	End B3 F58 380VAC/3PH/50HZ 5.5KW
SPACE HEATER	230VAC/1PH/50HZ
INSTALLATION	ON LAYDOWN SKID
DESIGN TEMPERATURE	-20C/60C

DISPENSING SKID	
QTY	ONE (1) UNIT
CAPACITY	225 LPM
FILTRATION	API 1581 TYPE S CATEGORY C
WATER REMOVAL	API 1583 (WATER MONITOR)
REFUELING METHOD	OVERWING
DESIGN PRESSURE	1000 KPAQ (PIPING & PRESSURE VESSELS)
DESIGN TEMPERATURE	-20C/60C
INSTALLATION	HELIDECK

TOTE TANK	
QTY	Two (2) UNIT
CAPACITY	2900 LITERS (EACH)
DESIGN CODE	ASME VII DIV. 1 / MDG T4 / DNW 2.7-1
DESIGN PRESSURE	217 KPAQ (HT) / -21 KPAQ (VAC)
INSTALLATION	LOOSE/ ON LAYDOWN SKID
DESIGN TEMPERATURE	-20C/60C

- NOTES :-
1. THE SYSTEM COMPLIES TO CAP-437 7TH.
 2. ALL ELECTRICAL/INSTRUMENT ARE SUITABLE FOR CLASS 1 DIV.2 GROUP D APPLICATION.
 3. ALL PIPING SYSTEM AND ALL EQUIPMENT ARE TO BE ELECTRICALLY BONDED.
 4. ALL THE ITEMS BEYOND THE DASH DOTTED LINES ARE NOT INCLUDED IN SCOPE OF SUPPLY AND TO BE CARRIED OUT BY OTHERS/CLIENTS.
 5. -
 6. PUMP CONTROL/OPERATION & SHUTDOWN LOGICS ARE DERIVED FROM THE MOTOR STARTER PANEL.
 7. SKID COAMING HEIGHT TO BE 150MM FOR PUMP SKID, DISPENSER SKID AND TANK SKID.
 8. TANKS' DRAIN SHALL ONLY PLUGGED WHEN TRANSFER OUT OF DESIGNED AREA.
 9. REFUELING OPERATION SHALL ALWAYS MAN FROM DISPENSER UNIT (REMOTE CONTROL PANEL).

AS-BUILT

REV	BY	DESCRIPTIONS	DATE
A	ST	ISSUED FOR REVIEW & APPROVAL	15/08/15

REVISION			
DESIGNED BY	ENGINEER	ST	15/08/15
CHECKED BY	ENGINEER LEAD	ST	15/08/15
APPROVED BY	ENGR MANAGER	ST	15/08/15
	DESIGNATION	NAME	DATE

PETRICO ENGINEERING PTE LTD

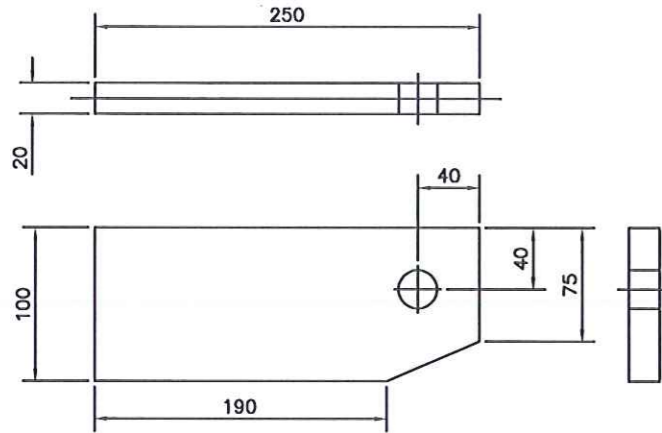
CUSTOMER : CSOC

PROJECT : HY4001/HY4002/HY4003

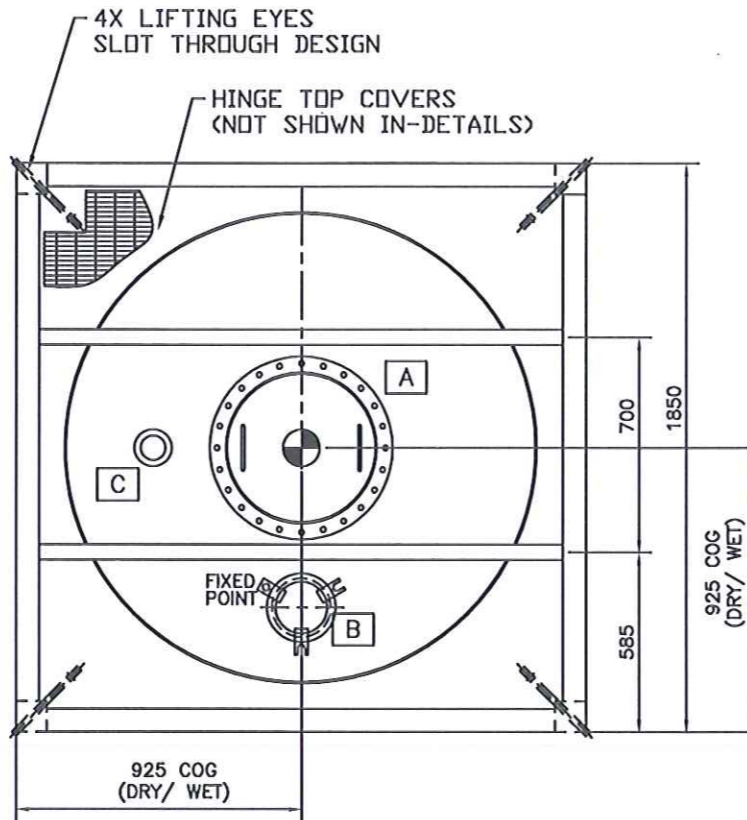
TITLE : P&ID FOR HELICOPTER REFUELING SYSTEM

PETRICO JOB NUMBER	CLASS
N/A	ABS
CUSTOMER DRAWING NUMBER:	REV
N/A	A
DRAWING NUMBER:	SHEET
PRS-1056-1	1/1

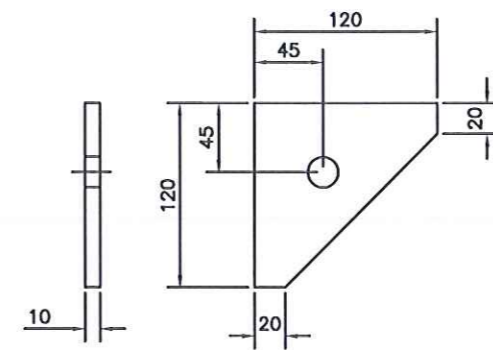
NOZZLE SCHEDULE <input checked="" type="checkbox"/>		
TP	DESCRIPTION	SIZE/RATING/MATERIAL
A	MANWAY	20" PROPRIETARY
B	INSPECTION HATCH	6" PROPRIETARY
C	PVRV	2.5" PROPRIETARY
D	FUEL OUTLET	3" PROPRIETARY
E	DRAIN/SAMPLE OUTLET	1.5" PROPRIETARY



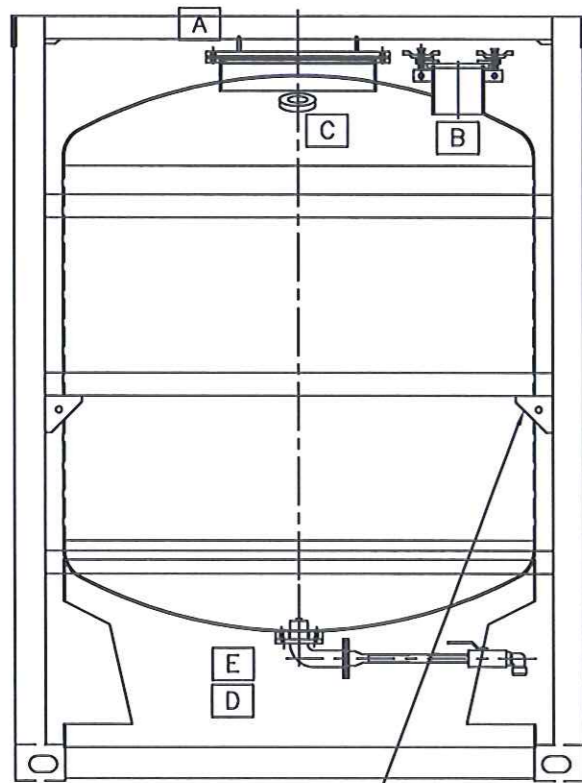
LIFTING EYE



TOTE TANK DESIGN SPECIFICATION	
DESIGN CODE	ASME VIII DIV. I & IMDG T4
PRESSURE	217 KPAG (INTERNAL)/-21 KPAG (VACUUM)
TEMPERATURE	-20 ° C / 60 ° C
CAPACITY	2900 LITERS
JOINT EFFICIENCY	0.7
NDT	100% DPI + 0% RT+ 100 MPI (MAIN LOAD POINT)
VESSEL MATERIAL	ASTM A240-316L
FRAME MATERIAL	ASTM A500 (DESIGN TO DNV 2.7-1)
WEIGHT	1,450 KG (EMPTY) / 3,830 KG (FULL)
PAINTING	OFFSHORE 3 COAT SYSTEM (FRAME)

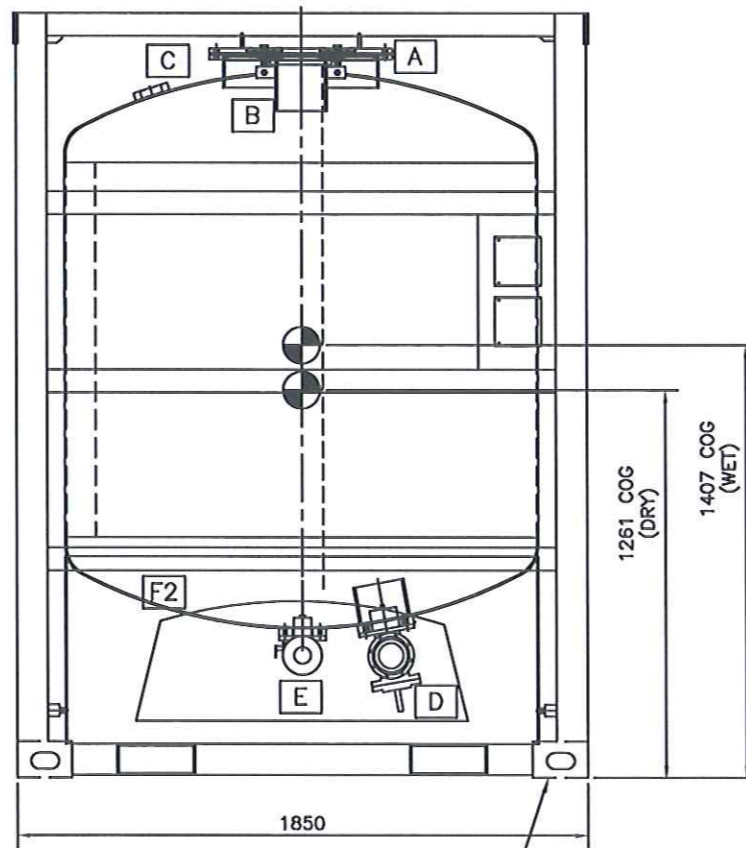


TIE DOWN LUG



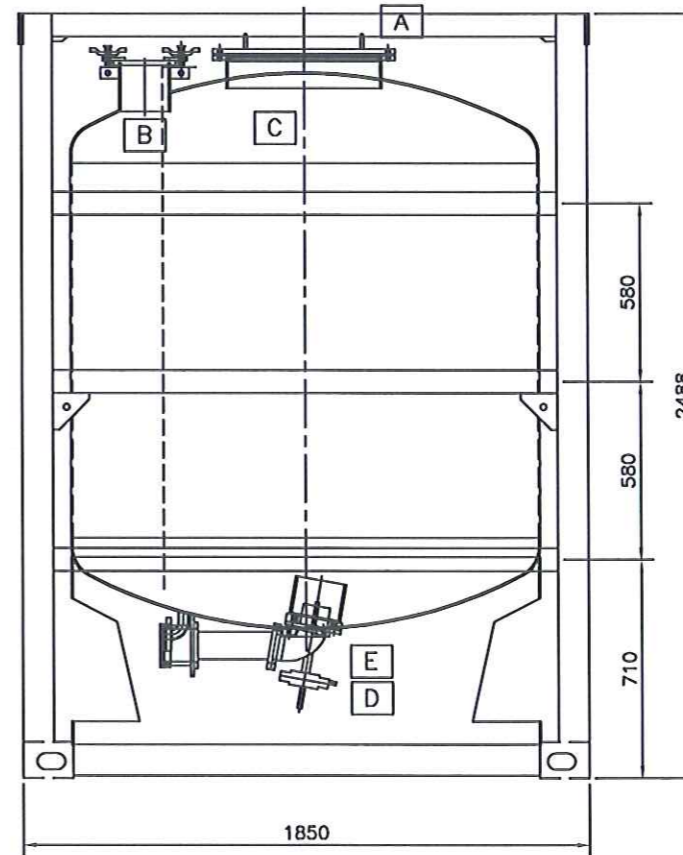
SIDE VIEW (LEFT)

4X TIE DOWN BRACKET FOR SECURING WHEN MOVE OUT OF COAMING SKID



FRONT VIEW

4X ISO CORNER BLOCK TO MATCH WITH LAYDOWN SKID



SIDE VIEW (RIGHT)

NOTES :-

1. ALL WELDING TO BE CARRIED OUT IN ACCORDANCE WITH QUALIFIED WELDING PROCEDURE TO ASME IX.
2. ALL FLANGES TO BE AS PER OR IN ACCORDANCE WITH ANSI B16.5.
3. ALL FLANGE FACING TO BE RF AND SHALL HAVE A FINISH OF 250 AARH.
4. ALL FLANGES BOLT HOLES TO STRADDLE PIPING CENTRELINE.
5. ALL DIMENSIONS SHOWN ARE IN MM UNLESS OTHERWISE SPECIFIED.
6. AMPLE LIFTING EYES WERE PROVIDED FOR LIFTING OPERATION.
7. ALL FILLET WELD 6MM UNLESS OTHERWISE SPECIFIED.
8. ALL MAJOR LOAD POINT SUBJECTED TO 100% MPI.
9. TANK C/W DRIP TRAY OF 6" HEIGHT COAMING WITH 2" PLUG ON THE DRIP TRAY.

AS-BUILT

REV	BY	DESCRIPTIONS	DATE
A	ST	ISSUED FOR REVIEW & APPROVAL	15/08/15

REVISION			
DESIGNED BY	ENGINEER	ST	15/08/15
CHECKED BY	ENGINEER LEAD	ST	15/08/15
APPROVED BY	ENGR MANAGER	ST	15/08/15
	DESIGNATION	NAME	DATE

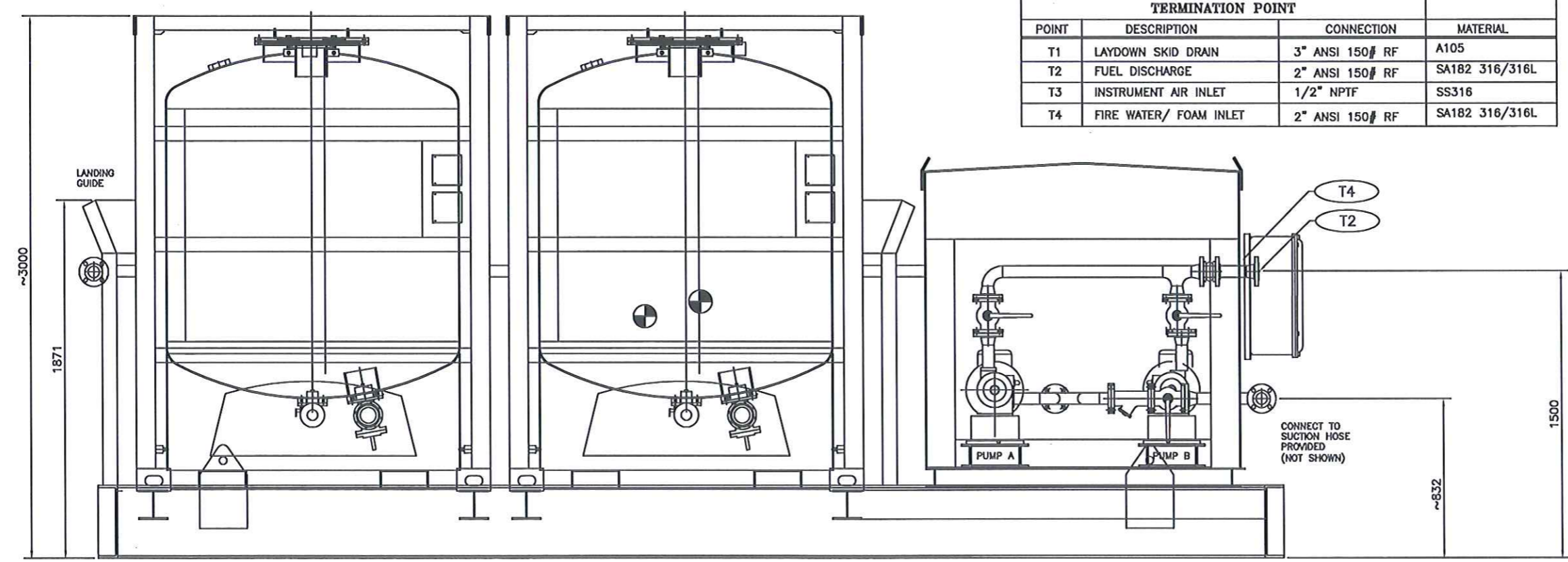
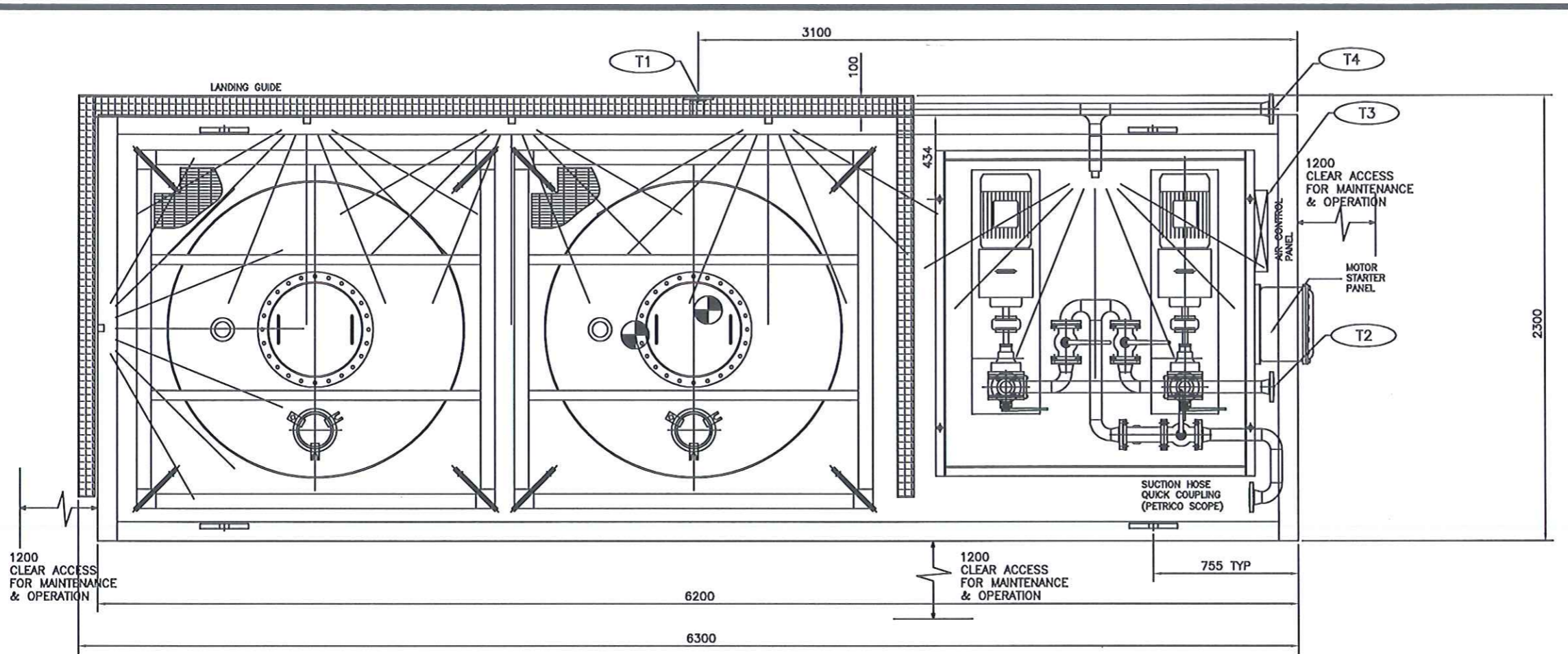
PETRICO ENGINEERING PTE LTD

CUSTOMER : CSOC

PROJECT : HY4001/ HY4002/ HY4003

TITLE : GA DRAWING FOR HELIFUEL PORTABLE TANK

PETRICO JOB NUMBER	CLASS
N/A	ABS
CUSTOMER DRAWING NUMBER:	REV
N/A	A
DRAWING NUMBER:	SHEET
PRS-1056-2	1/1



SIDE VIEW

TERMINATION POINT			
POINT	DESCRIPTION	CONNECTION	MATERIAL
T1	LAYDOWN SKID DRAIN	3" ANSI 150# RF	A105
T2	FUEL DISCHARGE	2" ANSI 150# RF	SA182 316/316L
T3	INSTRUMENT AIR INLET	1/2" NPTF	SS316
T4	FIRE WATER/ FOAM INLET	2" ANSI 150# RF	SA182 316/316L

- NOTES :-
1. ALL WELDING TO BE CARRIED OUT IN ACCORDANCE WITH QUALIFIED WELDING PROCEDURE TO ASME IX.
 2. ALL FLANGES TO BE AS PER OR IN ACCORDANCE WITH ANSI B16.5.
 3. ALL FLANGE FACING TO BE RF AND SHALL HAVE A FINISH OF 250 AARH.
 4. ALL FLANGES BOLT HOLES TO STRADDLE PIPING CENTRELINE.
 5. ALL DIMENSIONS SHOWN ARE IN MM UNLESS OTHERWISE SPECIFIED.
 6. AMPLE LIFTING EYES WERE PROVIDED FOR LIFTING OPERATION.
 7. SUCTION HOSE WAS PROVIDED TO CONNECT FROM PUMP'S SUCTION POINT TO TOTE TANK DISCHARGE POINT.
 8. LAYDOWN SKID WILL BE WELDED TO CLIENT PLATFORM.
 9. PUMP UNIT WILL BE BOLTED TO LAYDOWN SKID BY PETRICO.

☉ DENOTES OF COG.
 WEIGHT: 6,120 KGS (DRY)
 WEIGHT: 10,620 KGS (FULL)

AS-BUILT

REV	BY	DESCRIPTIONS	DATE
B	LKS	ISSUED FOR CONSTRUCTION	22/08/15
A	LKS	ISSUED FOR REVIEW & APPROVAL	15/08/15

REVISION			
DESIGNED BY	ENGINEER	LKS	15/08/15
CHECKED BY	ENGINEER LEAD	ST	15/08/15
APPROVED BY	ENGR MANAGER	ST	15/08/15
	DESIGNATION	NAME	DATE

PETRICO ENGINEERING PTE LTD

CUSTOMER : CSOC

PROJECT : HY4001/ HY4002/ HY4003

TITLE : GA DRAWING FOR HELIFUEL LAYDOWN SKID


PETRICO JOB NUMBER	CLASS
N/A	ABS
CUSTOMER DRAWING NUMBER:	REV
N/A	B
DRAWING NUMBER:	SHEET
PRS-1056-3	1/3

TERMINATION POINT			
POINT	DESCRIPTION	CONNECTION	MATERIAL
T1	PUMP FUEL INLET (CONNECT TO SUCTION HOSE)	2" ANSI 150# RF	SA182 316/316L
T2	PUMP FUEL OUTLET	2" ANSI 150# RF	SA182 316/316L
T3	PUMP SKID DRAIN	2" NPTF	SA105
T4	INSTRUMENT AIR SUPPLY	1/2" NPTF	SS316

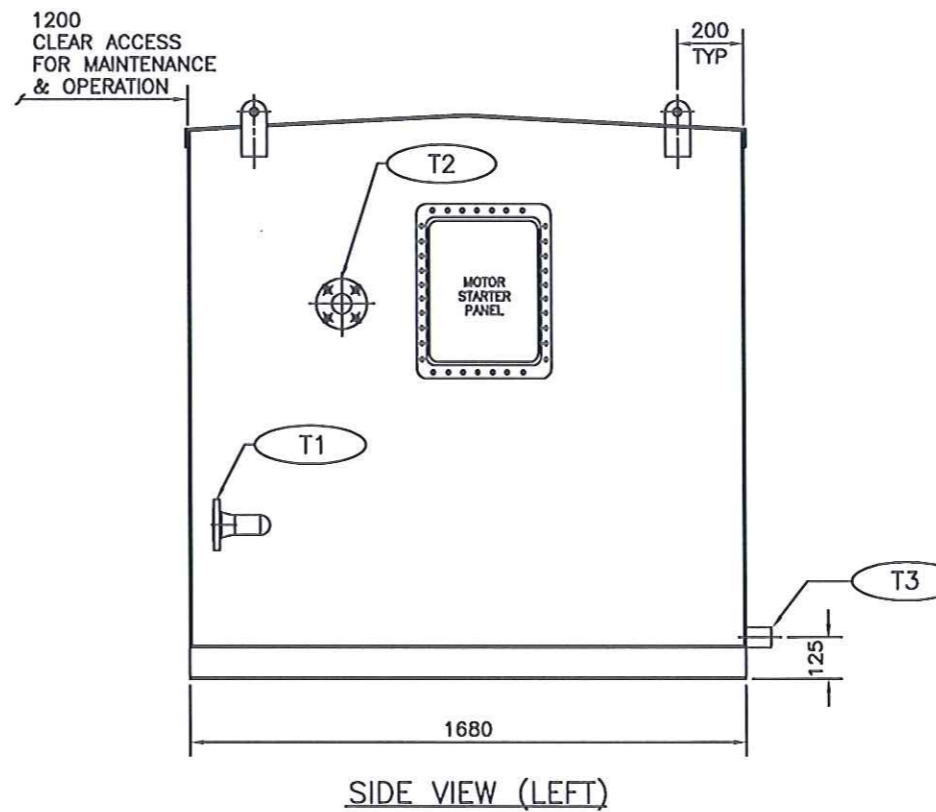
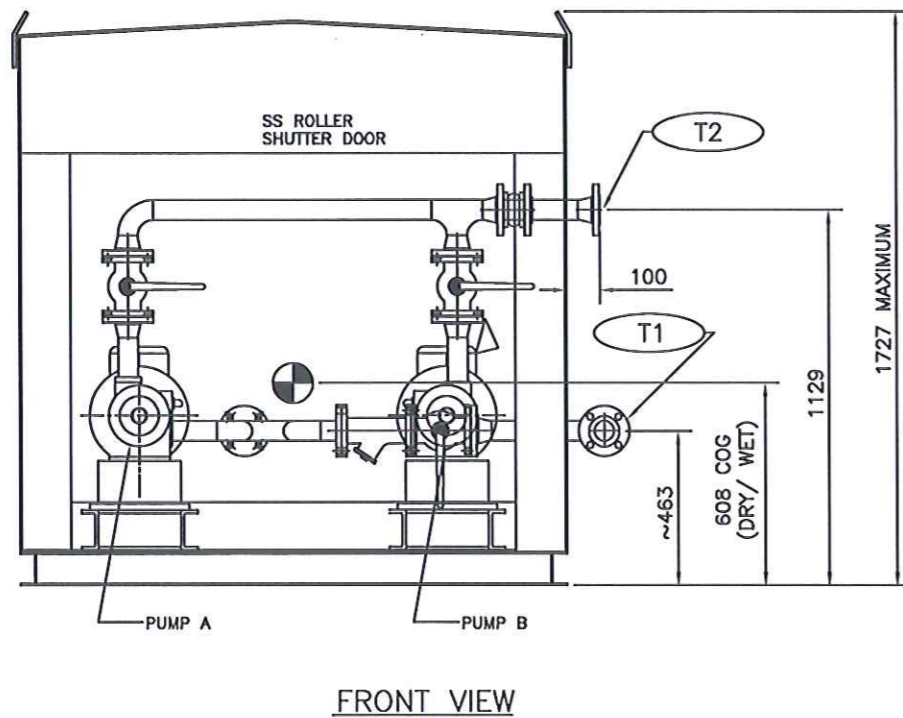
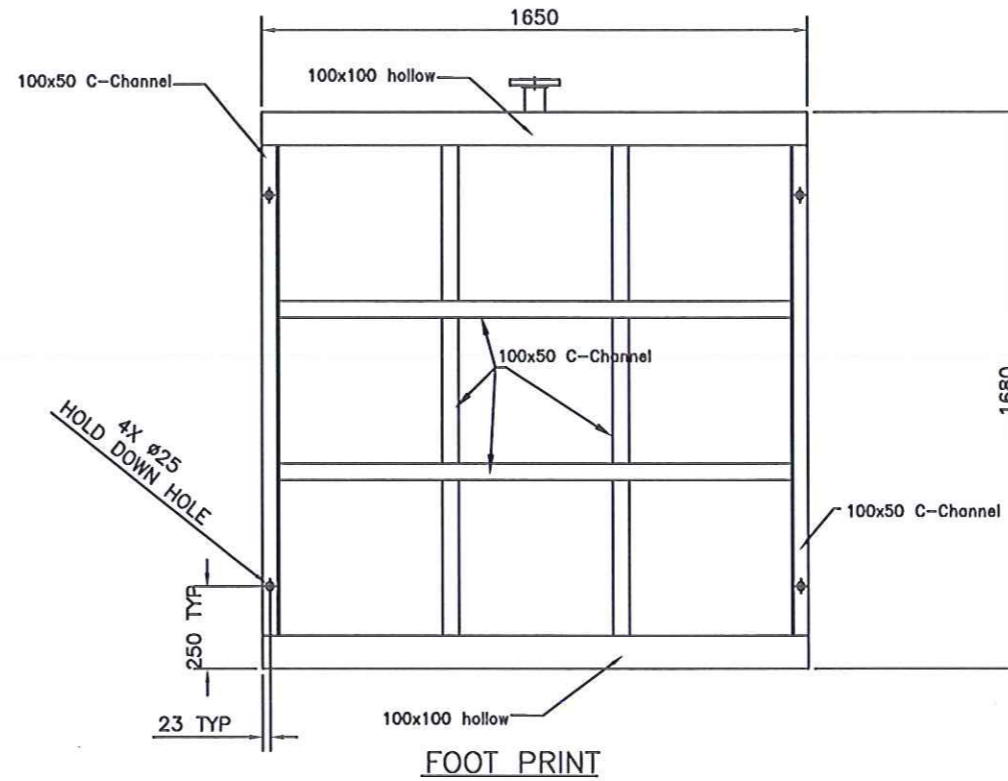
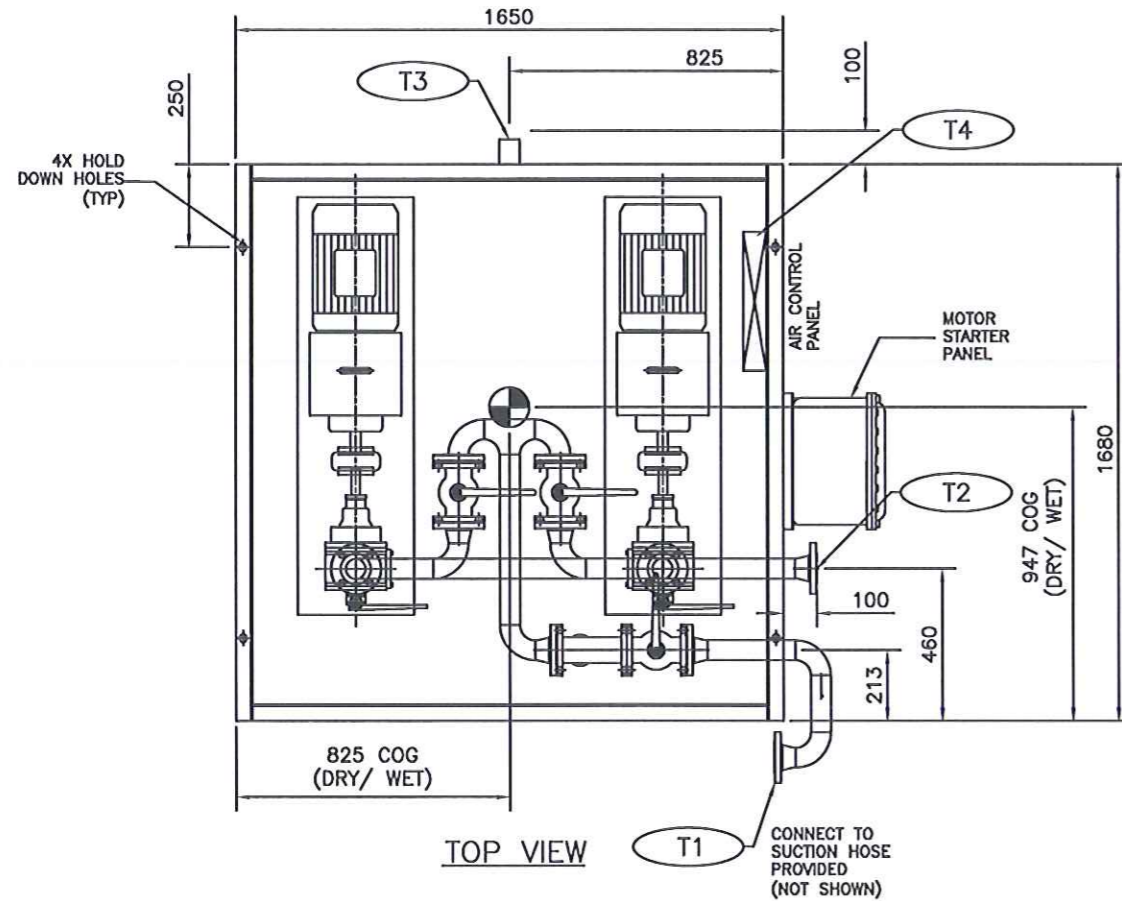
DESIGN DATA	
ITEM	PUMP UNIT
LOCATION	ON COMMON LAYDOWN SKID
FLOW CAPACITY	225 LPM (DESIGN)
POWER BY	380 VAC/3PH/50HZ (5.5 KW)
SPACE HEATER	230 VAC/1PH/50HZ
WEIGHT	1,320KG (EMPTY) / 1,420KG (OPERATION)

NOTES :-

- ALL WELDING TO BE CARRIED OUT IN ACCORDANCE WITH QUALIFIED WELDING PROCEDURE TO ASME IX.
- ALL FLANGES TO BE AS PER OR IN ACCORDANCE WITH ANSI B16.5.
- ALL FLANGE FACING TO BE RF AND SHALL HAVE A FINISH OF 250 AARI.
- ALL FLANGES BOLT HOLES TO STRADDLE PIPING CENTRELINE.
- ALL DIMENSIONS SHOWN ARE IN MM UNLESS OTHERWISE SPECIFIED.
- AMPLE LIFTING EYES WERE PROVIDED FOR LIFTING OPERATION.
- SUCTION HOSE WAS PROVIDED TO CONNECT FROM PUMP SKID SUCTION POINT TO TOTE TANK.

 DENOTES CENTRE OF GRAVITY

AS-BUILT



REV	BY	DESCRIPTIONS	DATE
A	LKS	ISSUED FOR REVIEW & APPROVAL	15/08/15
REVISION			
DESIGNED BY	ENGINEER	LKS	15/08/15
CHECKED BY	ENGINEER LEAD	ST	15/08/15
APPROVED BY	ENGR MANAGER	ST	15/08/15
	DESIGNATION	NAME	DATE

PETRICO ENGINEERING PTE LTD

CUSTOMER : CSOC

PROJECT : HY4001/ HY4002/ HY4003

TITLE : GA DRAWING FOR HELIFUEL PUMP SKID

PETRICO JOB NUMBER	CLASS
N/A	ABS
CUSTOMER DRAWING NUMBER:	REV
N/A	A
DRAWING NUMBER:	SHEET
PRS-1056-4	1/1

TERMINATION POINT			
POINT	DESCRIPTION	CONNECTION	MATERIAL
T1	DISPENSER FUEL INLET	2" ANSI 150# RF	SA182 316/316L
T2	SKID DRAIN POINT	2" ANSI 150# RF	A105
T3	FIRE WATER/ FORM INLET	2" ANSI 150# RF	SA182 316/316L

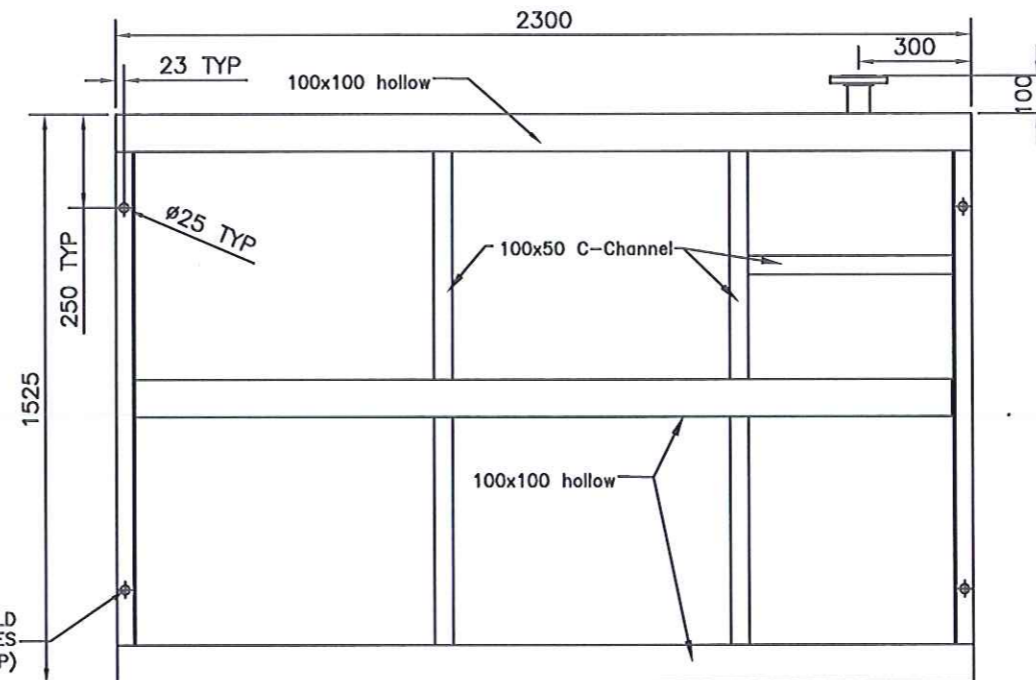
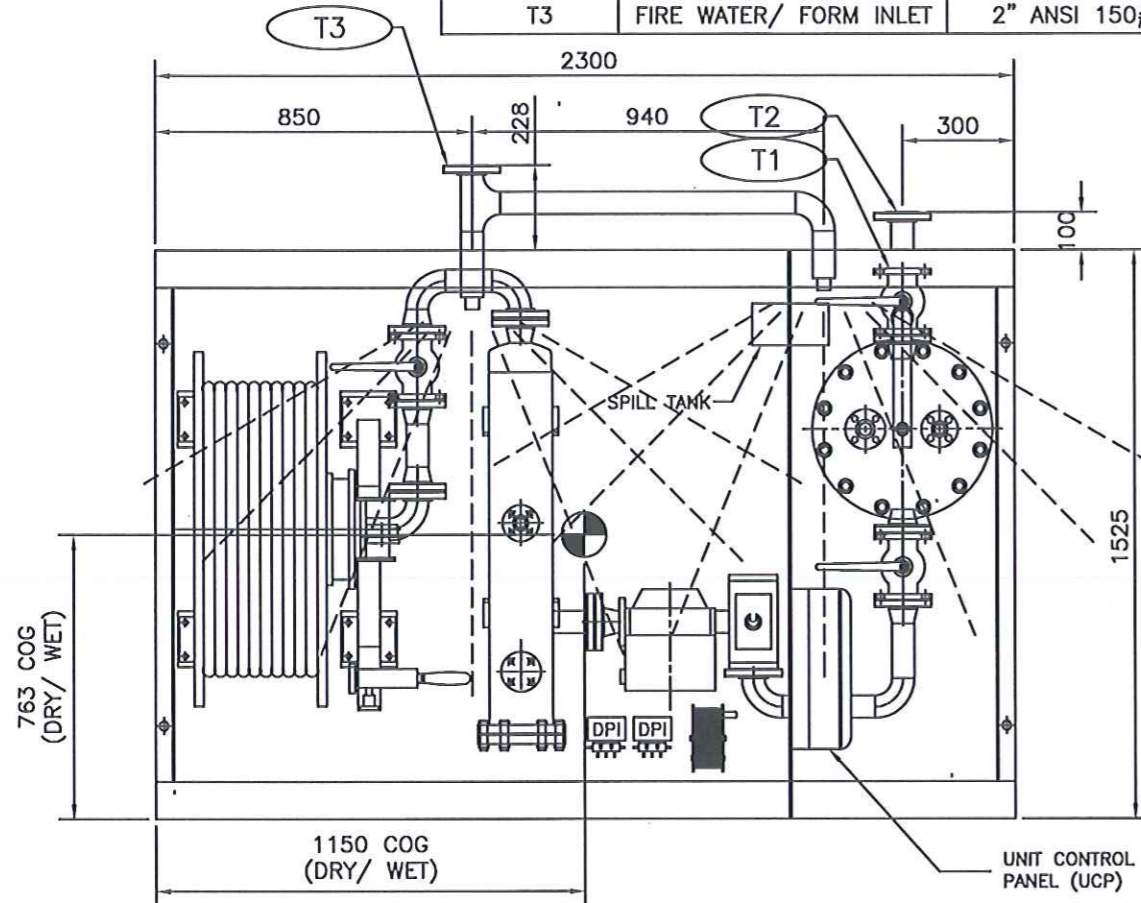
DESIGN DATA	
ITEM	DISPENSER UNIT
LOCATION	HELIDECK
FLOW CAPACITY	225 LPM
FILTRATION	API 1581 TYPE S 5TH ED (SIMILARITY)
WATER REMOVAL	API 1583 6TH ED
REFUELING METHOD	OVERWING
WEIGHT	1,320KG (EMPTY) / 1,420KG (OPERATION)

NOTES :-

1. ALL WELDING TO BE CARRIED OUT IN ACCORDANCE WITH QUALIFIED WELDING PROCEDURE TO ASME IX.
2. ALL FLANGES TO BE AS PER OR IN ACCORDANCE WITH ANSI B16.5.
3. ALL FLANGE FACING TO BE RF AND SHALL HAVE A FINISH OF 250 AARH.
4. ALL FLANGES BOLT HOLES TO STRADDLE PIPING CENTRELINE.
5. ALL DIMENSIONS SHOWN ARE IN MM UNLESS OTHERWISE SPECIFIED.

 DENOTES CENTRE OF GRAVITY

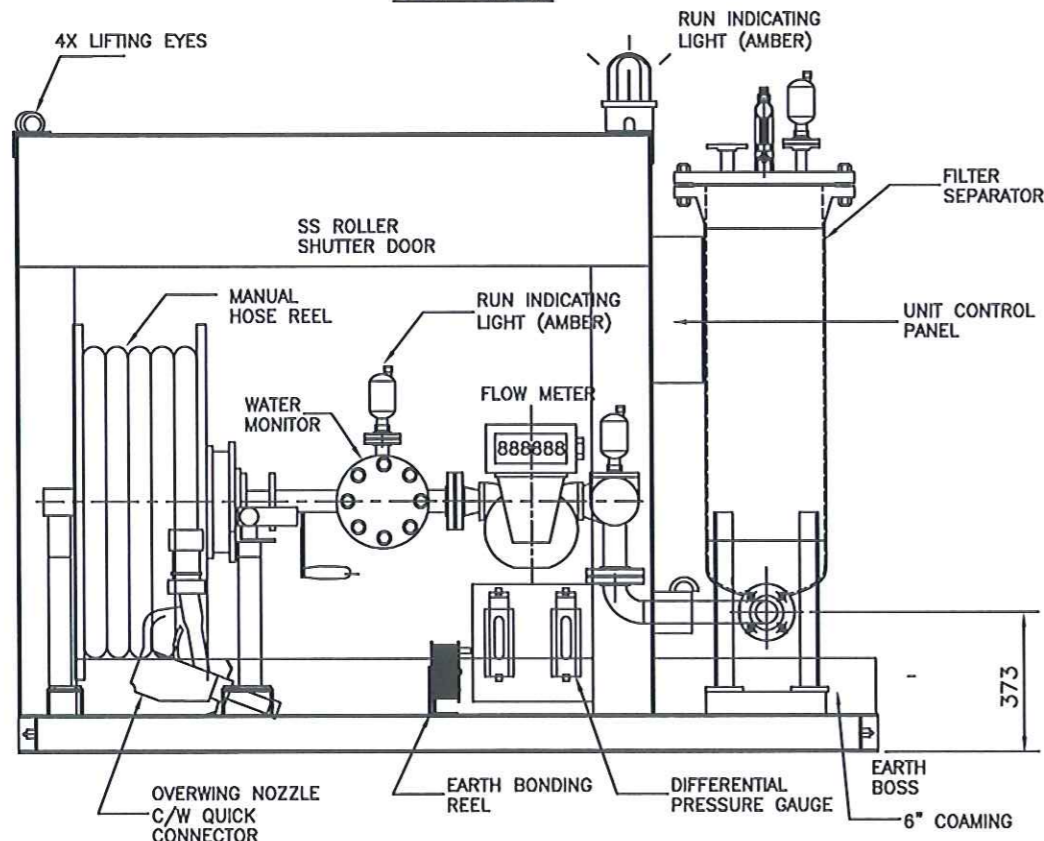
AS-BUILT



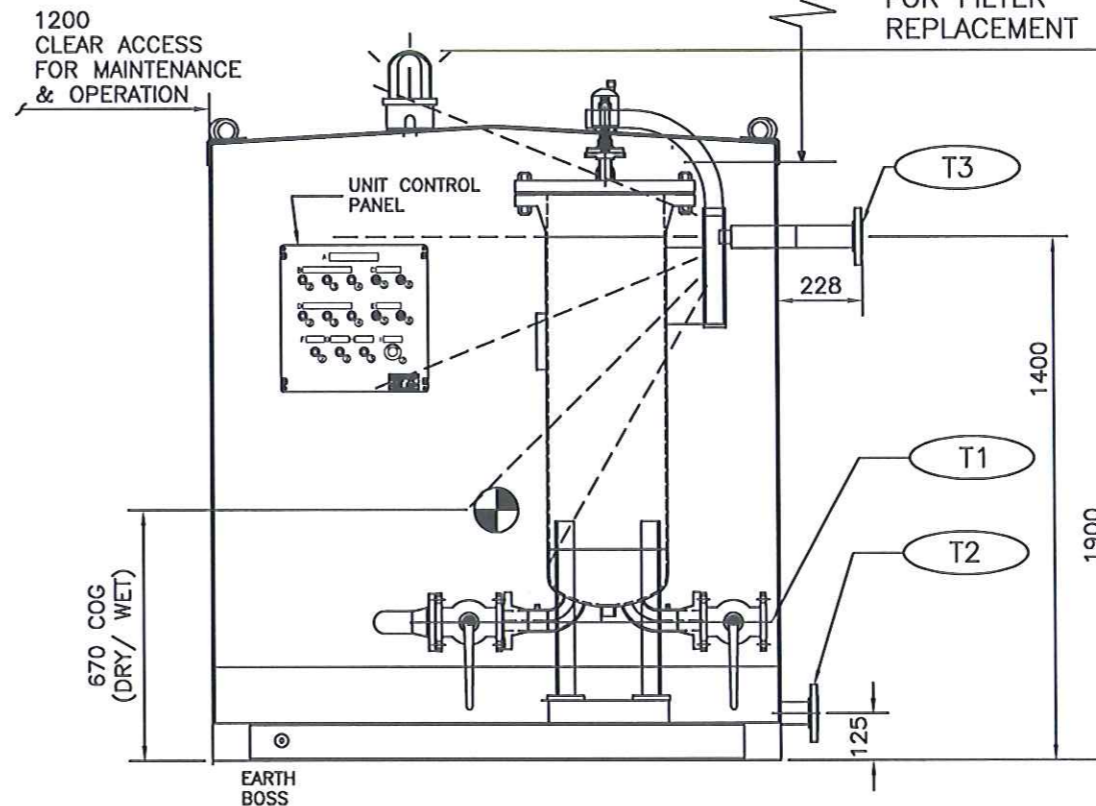
TOP VIEW

FOOT PRINT

1200 CLEAR ACCESS FOR FILTER REPLACEMENT



FRONT VIEW



SIDE VIEW (LEFT)

REV	BY	DESCRIPTIONS	DATE
A	LKS	ISSUED FOR REVIEW & APPROVAL	15/08/15

REVISION			
DESIGNED BY	ENGINEER	ST	DATE
CHECKED BY	ENGINEER LEAD	ST	15/08/15
APPROVED BY	ENGR MANAGER	ST	15/08/15
	DESIGNATION	NAME	DATE

PETRICO ENGINEERING PTE LTD

CUSTOMER : CSOC

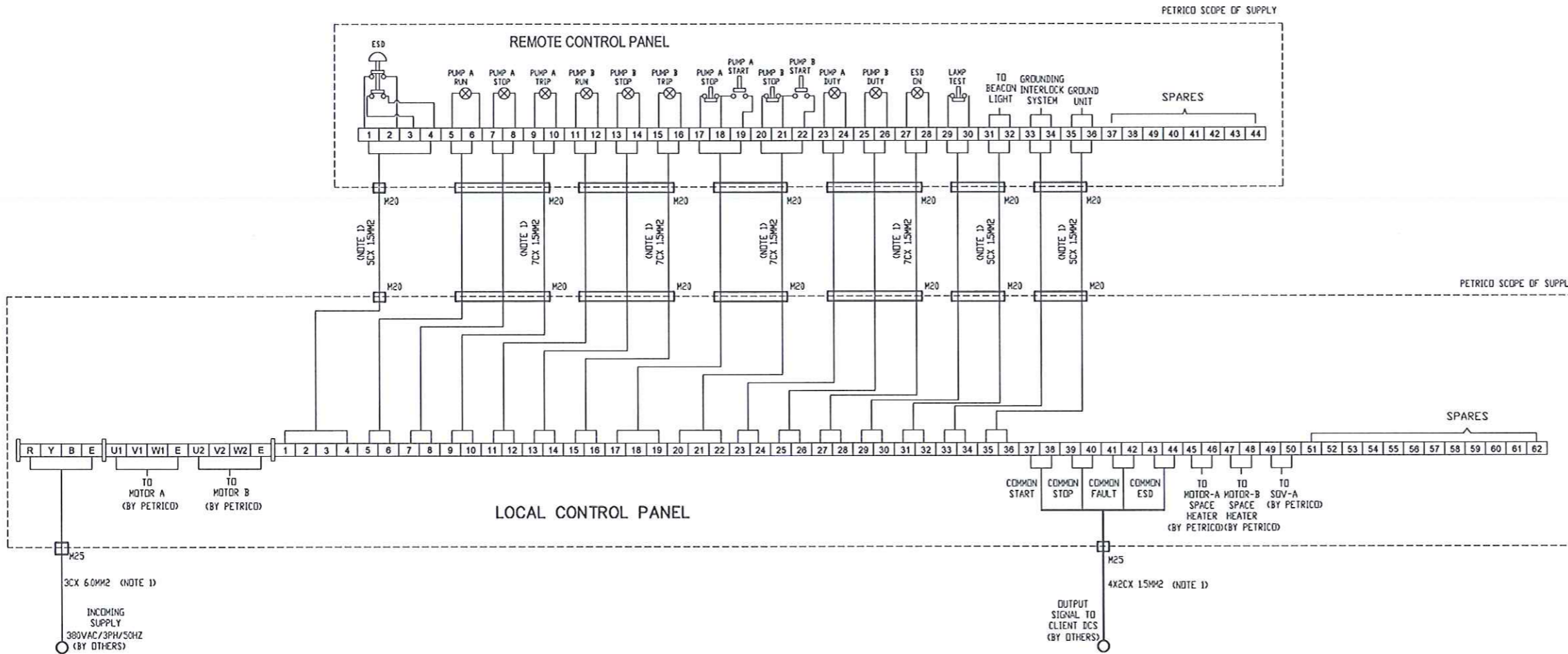
PROJECT : HY4001/ HY4002/ HY4003

TITLE : GA DRAWING FOR HELIFUEL DISPENSING UNIT

PETRICO JOB NUMBER	CLASS
N/A	ABS
CUSTOMER DRAWING NUMBER:	REV
N/A	A
DRAWING NUMBER:	SHEET
PRS-1056-5	1/1

NOTES :
 1. CLIENT TO CONFIRM TYPE OF CABLE TO BE USED FOR PANEL
 CABLE ENTRY ARRANGEMENT.

AS-BUILT



REV	BY	DESCRIPTIONS	DATE
A	LKS	ISSUED FOR APPROVAL	15/08/15
REVISION			
DESIGNED BY	ENGINEER	LKS	15/08/15
CHECKED BY	ENGINEER LEAD	ST	15/08/15
APPROVED BY	ENGR MANAGER	ST	15/08/15
	DESIGNATION	NAME	DATE

PETRICO ENGINEERING PTE LTD

CUSTOMER : CSOC

PROJECT :
 HY4001/ HY 4002/ HY4003

TITLE :
 WIRING INTERFACE DRAWING

PETRICO JOB NUMBER	CLASS
-	ABS
CUSTOMER DRAWING NUMBER: N/A	REV A
DRAWING NUMBER: PRS-1056-9	SHEET 1/1

ASP
I-20090

CUSTOMER ENCLOSURE ASCS 44 S/M YEAR -

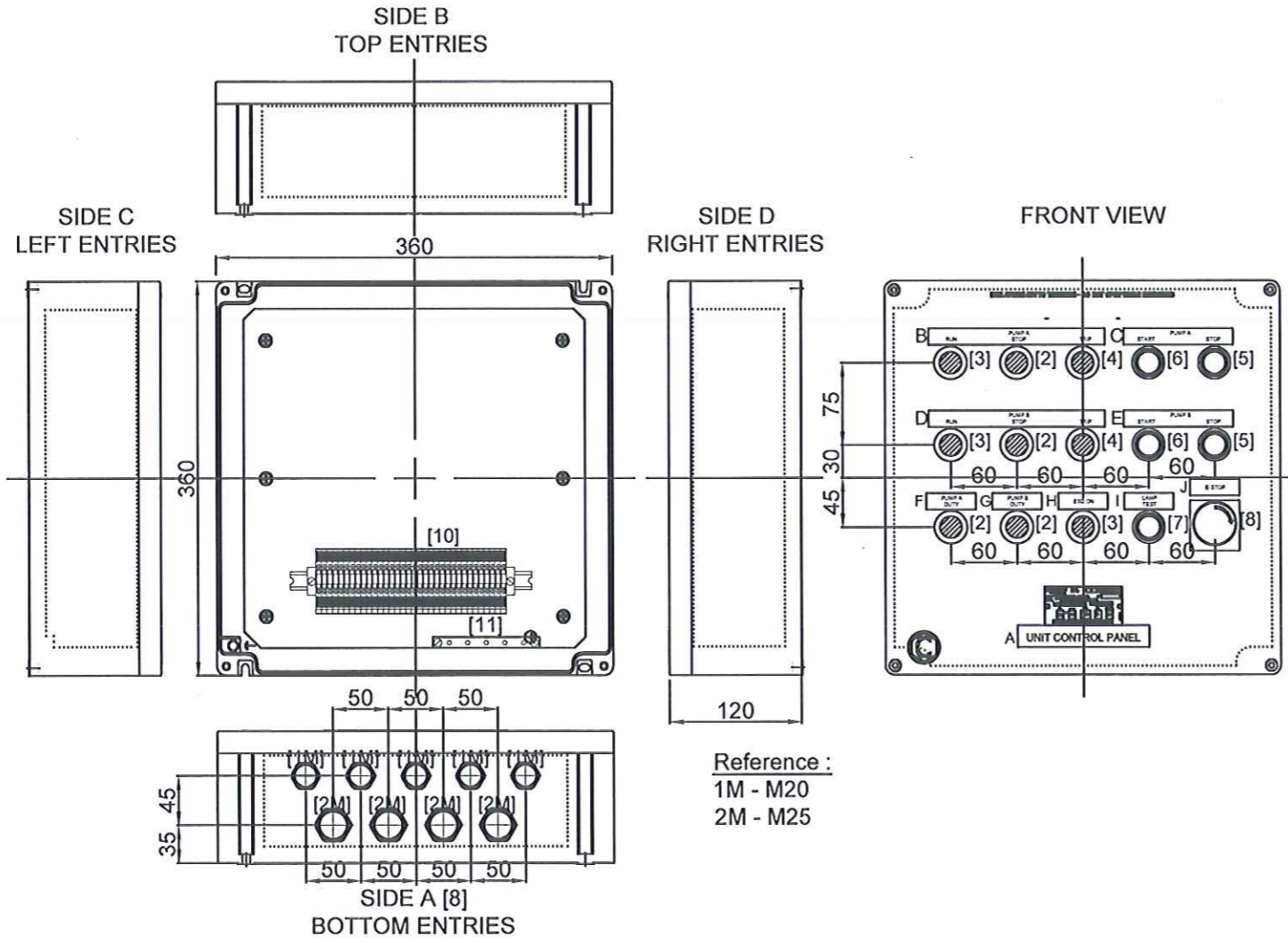
CE 0722 II 2G Ex d IIC T5 Gb
II 2D Ex TB IIC T100 C Db IP66 SPC

INERIS13ATEX0041
IECEX INE 13.0057

Tamb -40/+55

Nr 44 x mmq 2.5 Volt 380 Hz 50 Ampere 16

NON APRIRE QUANDO PUO' ESSERE PRESENTE UN'ATMOSFERA ESPLOSIVA
DO NOT OPEN WHEN AN EXPLOSIVE GAS ATMOSPHERE MAY BE PRESENT



TAG PLATE	DESCRIPTION
A	UNIT CONTROL PANEL
B	RUN PUMP A STOP TRIP
C	START PUMP A STOP
D	RUN PUMP B STOP TRIP
E	START PUMP B STOP
F	PUMP A DUTY
G	PUMP B DUTY
H	ESD ON
I	LAMP TEST
J	E-STOP

Reference :
1M - M20
2M - M25

REMOTE CONTROL PANEL

QUANTITY: 1 sets

Pos.	Qty	Description	Code	Maker
1	1	GRP Enclosure	ASCS44	Nuova ASP
2	4	Pilot Light - Green 220Vac	LIE3G40116/LIE1G40100A	Nuova ASP
3	3	Pilot Light - Red 220Vac	LIE3R40115/LIE1R40099A	
4	2	Pilot Light - Yellow 220Vac	LIE3Y40117/LIE1Y40101A	
5	2	Push Button Green "NO Contact"	PBE3PG40092B/PBE1NO40090-1	
6	2	Push Button Red "NC Contact"	PBE3PR40092A/PBE1NC40090-1	
7	1	Push Button Black "NO Contact"	PBE3FSC40096/PBE1NC40090-1/PBE1NO40090-1	
8	1	Emergency Push Button c/w Protection Cover "1 NC+1 NO"	PBE3FSC40096/PBE1NC40090-1/PBE1NO40090-1	
9	4	Cable Entries - M25 (Bottom)	-	Weidmuller
	4	PVC Stop Plug c/w L/N & Washer - M25	-	
	5	Cable Entries - M20 (Bottom)	-	
	3	PVC Stop Plug c/w L/N & Washer - M20	-	
10	44	Terminals - 2.5mmsq	WDU2.5	Weidmuller
11	1	5 Way Earth Bar	-	-

- NOTES :
- ALL DIMENSION IN MM UOS.
 - CLIENT SPECIFIC REQUIREMENT. START - YELLOW
STOP - GREEN
TRIP - RED
 - CLIENT TO DOUBLE CONFIRM DURING DETAILS ENGINEERING.

AS-BUILT

REV	BY	DESCRIPTIONS	DATE
A	LKS	ISSUED FOR APPROVAL	15/08/15

REVISION			
DESIGNED BY	ENGINEER	LKS	15/08/15
CHECKED BY	ENGINEER LEAD	ST	15/08/15
APPROVED BY	ENGR MANAGER	ST	15/08/15
	DESIGNATION	NAME	DATE

PETRICO ENGINEERING PTE LTD

CUSTOMER : CSOC

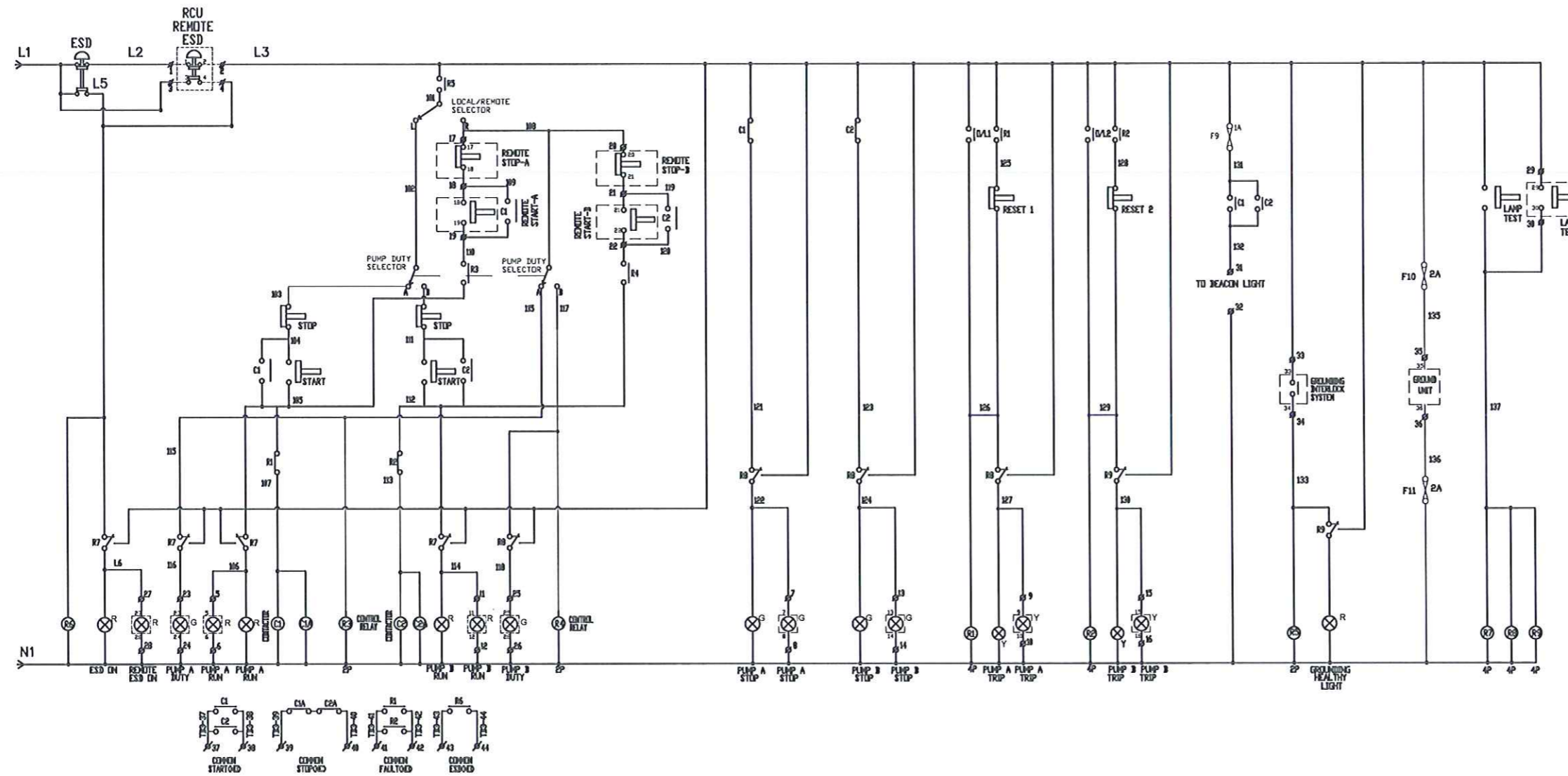
PROJECT : HY4001/ HY4002/ HY4003

TITLE : PANEL & TERMINAL LAYOUT DRAWING

PETRICO JOB NUMBER		CLASS
-		ABS
CUSTOMER DRAWING NUMBER:		REV
N/A		A
DRAWING NUMBER:		SHEET
PRS-1056-12		3/3

NOTES :

AS-BUILT



REV	BY	DESCRIPTIONS	DATE
A	LKS	ISSUED FOR APPROVAL	15/08/15

REVISION			
DESIGNED BY	ENGINEER	ST	15/08/15
CHECKED BY	ENGINEER LEAD	ST	15/08/15
APPROVED BY	ENGR MANAGER	ST	15/08/15
	DESIGNATION	NAME	DATE

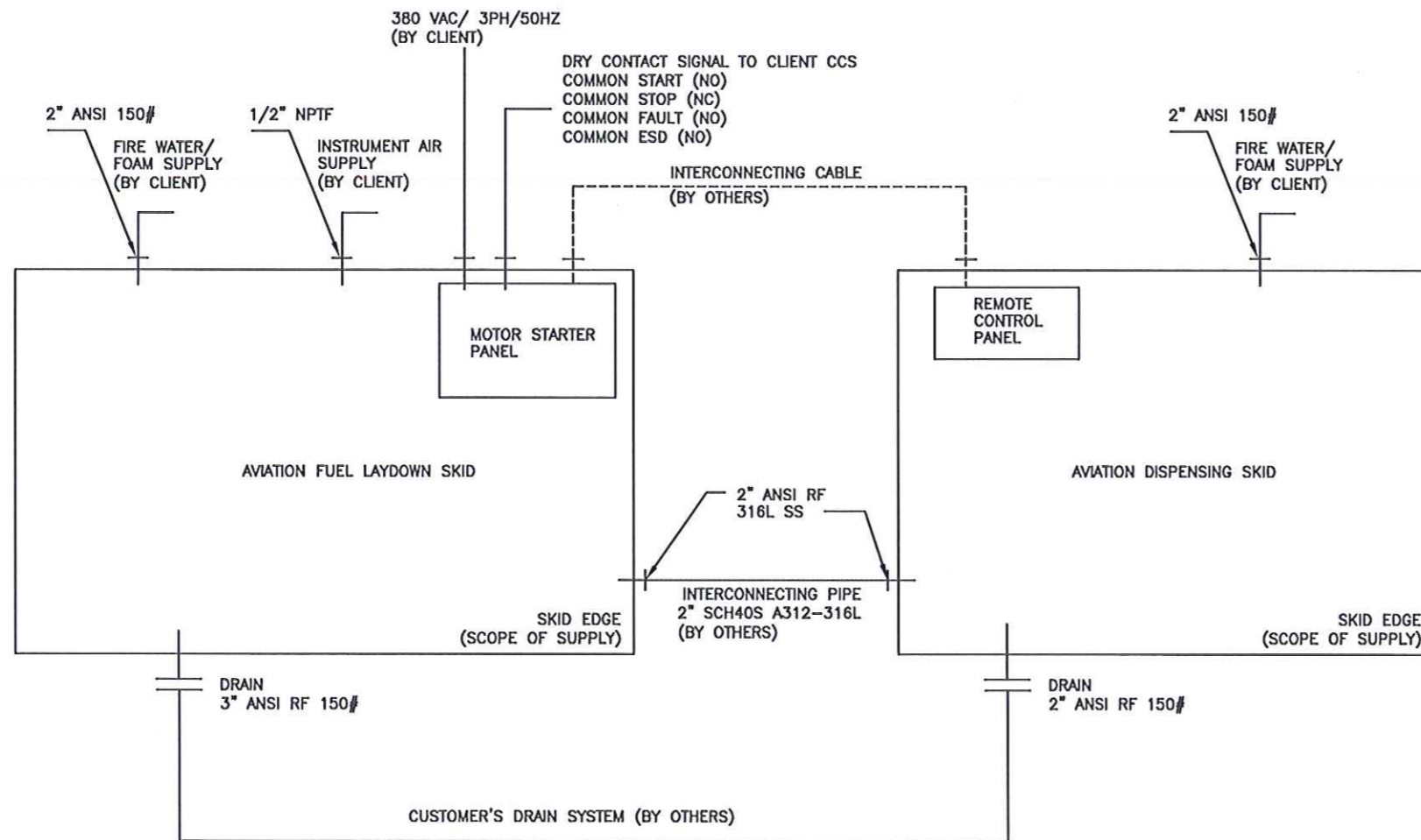
PETRICO ENGINEERING PTE LTD

CUSTOMER : CSOC

PROJECT :
HY4001/ HY4002/ HY4003

TITLE :
ONE LINE ELECTRICAL DIAGRAM

PETRICO JOB NUMBER	CLASS
-	ABS
CUSTOMER DRAWING NUMBER: N/A	REV A
DRAWING NUMBER: PRS-1056-13	SHEET 2/2



NOTES :

1. REFER P&ID FOR DETAILS INFORMATION.

AS-BUILT

REV	BY	DESCRIPTIONS	DATE
A	LKS	ISSUED FOR REVIEW & APPROVAL	15/08/15
REVISION			
DESIGNED BY	ENGINEER	LKS	15/08/15
CHECKED BY	ENGINEER LEAD	ST	15/08/15
APPROVED BY	ENGR MANAGER	ST	15/08/15
	DESIGNATION	NAME	DATE

PETRICO ENGINEERING PTE LTD

CUSTOMER : CSOC

PROJECT : HY4001/ HY4002/ HY4003

TITLE : UTILITY INTERFACE DRAWING

PETRICO JOB NUMBER	CLASS
-	ABS
CUSTOMER DRAWING NUMBER: N/A	REV A
DRAWING NUMBER: PRS-1056-14	SHEET 1/1

MANUFACTURING DATA

MANUFACTURER: PETRICO ENGINEERING PTE LTD
 CLIENT: CHINA SHIPBUILDING & OFFSHORE CO., LTD
 ITEM: AVIATION FUEL TRANSPORTABLE TANK
 TAG NO.: TBA
 TANK SERIAL NO.: XXXXX
 PROJECT: HY4001
 CAPACITY: 2900 LITER
 DESIGN PRESSURE: 2.17BARG(INT)/-0.21BARG(EXT)
 DESIGN TEMPERATURE: -20°C/60°C
 DRWG NO.: PRS-1056-2
 TEST PRESSURE: 2.86 BARG (M.A.W.P X 1.3)
 DESIGN CODE: ASME VIII DIV.1/DNV2.7-1/IMDG T4
 STRESS RELIEF : NO
 DATE OF MANUFACTURE : OCTOBER 2015
 CERTIFICATION BY : ABS CLASS
 CORROSION ALLOWANCE : 0
 RADIOGRAPHY/ DPI : SPOT/ 100%
 WEIGHT : 1,450 KG (EMPTY) / 3,950 KG (FULL)
 MATERIAL OF CONSTRUCTION : ASTM A240-316L

AVIATION FUEL TRANSPORTABLE TANK #1/ #2

MANUFACTURING DATA

MANUFACTURER: PETRICO ENGINEERING PTE LTD
 CLIENT: CHINA SHIPBUILDING & OFFSHORE CO., LTD
 ITEM: LAYDOWN SKID
 TAG NO.: TBA
 SERIAL NO.: XXXXXXX
 PROJECT: HY4001
 PO NO.: XXXXXXX
 DRWG NO.: PRS-1056-3
 DATE OF MANUFACTURE : OCTOBER 2015
 CERTIFICATION BY: ABS CLASS
 WEIGHT : 6500KG (EMPTY) /11500KG (FULL)

JETTISON PLATFORM

MANUFACTURING DATA

MANUFACTURER: PETRICO ENGINEERING PTE LTD
 CLIENT: CHINA SHIPBUILDING & OFFSHORE CO., LTD
 ITEM: FILTER SEPARATOR
 TAG NO.: TBA
 SERIAL NO.: XXXXXXX
 PROJECT: HY4001
 CAPACITY: 80 LITER
 DESIGN PRESSURE: 10.5 BARG
 OPERATING PRESSURE: 50 PSIG
 DESIGN TEMPERATURE: -20°C/60°C
 DESIGN CODE: ASME VIII DIV.1 2013ED
 FILTRATION: API 1581 TYPE S 5TH (SIMILARITY)
 HYDROSTATIC TEST PRESSURE: 14.3 BARG
 DATE OF MANUFACTURE : OCTOBER 2015
 CORROSION ALLOWANCE: 0
 RADIOGRAPHY: SPOT
 DYE PENETRANT TEST: 100%
 CERTIFICATION BY: ABS CLASS
 WEIGHT : 151 KG (EMPTY) / 215 KG (FULL)

FILTER SEPARATOR

MANUFACTURING DATA

MANUFACTURER: PETRICO ENGINEERING PTE LTD
 CLIENT: CHINA SHIPBUILDING & OFFSHORE CO., LTD
 ITEM: DISPENSER SKID
 TAG NO.: TBA
 SERIAL NO.: XXXXXXX
 PROJECT: HY4001
 PO NO.: XXXXX
 DISPENSING CAPACITY: 225 LPM/13.5 M3/HR
 MAX DISCHARGE PRESSURE: 6.0 BARG
 DESIGN TEMPERATURE: -20°C/60°C
 DRWG NO.: PRS-1056-5
 HYDROSTATIC TEST PRESSURE: 14.3 BARG (PIPING)
 DATE OF MANUFACTURE : OCTOBER 2015
 CERTIFICATION BY: ABS CLASS
 WEIGHT : 1,320 KG (EMPTY)/1,420 KG (FULL)
 REFUELING METHOD: OVERWING

AVIATION FUEL DISPENSING SKID

MANUFACTURING DATA

MANUFACTURER: PETRICO ENGINEERING PTE LTD
 CLIENT: CHINA SHIPBUILDING & OFFSHORE CO., LTD
 ITEM: PUMP SKID
 TAG NO.: TBA
 SERIAL NO.: XXXXXXX
 PROJECT: HY4001
 PO NO.: XXXXXXX
 DISPENSING CAPACITY: 225 LPM/13.5 M3/HR
 MAX DISCHARGE PRESSURE: 6.0 BARG
 DESIGN TEMPERATURE: -20°C/60°C
 DRWG NO.: PRS-1056-4
 PUMP TYPE: PD ROTARY VANE
 DRIVER: ELECTRIC MOTOR
 HYDROSTATIC TEST PRESSURE: 14.3 BARG (PIPING)
 DATE OF MANUFACTURE : OCTOBER 2015
 CERTIFICATION BY: ABS CLASS
 WEIGHT : 1,220 KG (EMPTY) / 1,320 KG (FULL)

AVIATION FUEL PUMP SKID

MANUFACTURING DATA

MANUFACTURER: PETRICO ENGINEERING PTE LTD
 CLIENT: CHINA SHIPBUILDING & OFFSHORE CO., LTD
 ITEM: WATER MONITOR
 TAG NO.: TBA
 SERIAL NO.: XXXXXXX
 PROJECT: HY4001
 CAPACITY: 14 LITER
 DESIGN PRESSURE: 10.5 BARG
 OPERATING PRESSURE: 50 PSIG
 DESIGN TEMPERATURE: -20°C/60°C
 DESIGN CODE: ASME VIII DIV.1 2013ED
 FILTRATION: API 1583 6TH ED
 HYDROSTATIC TEST PRESSURE: 14.3 BARG
 DATE OF MANUFACTURE : OCTOBER 2015
 CORROSION ALLOWANCE: 0
 RADIOGRAPHY: SPOT
 DYE PENETRANT TEST: 100%
 CERTIFICATION BY: ABS CLASS
 WEIGHT : 58 KG (EMPTY) / 71 KG (FULL)

WATER MONITOR

NOTES :-

1. DIMENSION SHOWN IN MM UOS.
2. MATERIAL 1MM THK 316SS PLATE.
3. LETTERING TO BE BLACK AND BACKGROUND TO BE BRIGHT METAL.
4. LETTERING TO BE 3MM SIZE AND LOGO TO BE 10MM SIZE.

AS-BUILT

REV	BY	DESCRIPTIONS	DATE
A	LKS	ISSUED FOR REVIEW & APPROVAL	15/08/15
REVISION			
DESIGNED BY	ENGINEER	LKS	15/08/15
CHECKED BY	ENGINEER LEAD	TSY	15/08/15
APPROVED BY	ENGR MANAGER	ST	15/08/15
	DESIGNATION	NAME	DATE

PETRICO ENGINEERING PTE LTD

CUSTOMER : CSOC

PROJECT : HY4001/ HY4002/ HY4003

TITLE : NAMEPLATE DRAWING

PETRICO JOB NUMBER	CLASS
-	ABS
CUSTOMER DRAWING NUMBER:	REV
N/A	A
DRAWING NUMBER:	SHEET
PRS-1056-15	1/1