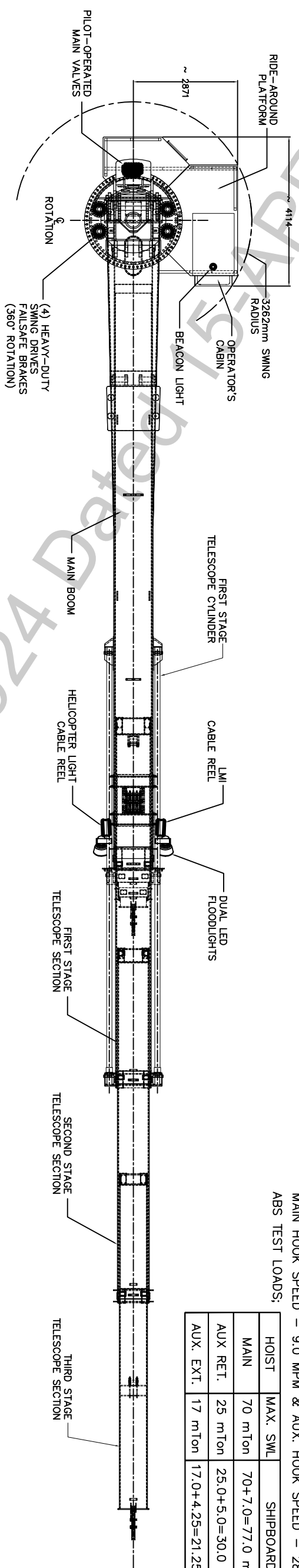


INSIDE CABIN/AC & HEATER:
 CHAIR
 STARTER PUSHBUTTONS
 LIGHT SWITCHES
 HORN BUTTON
 MULTI-BANK PILOT VALVES
 ATB SWITCH
 ATB/LMI SWITCH
 PILOT VALVES



FOR HULL NUMBER: GS 13182

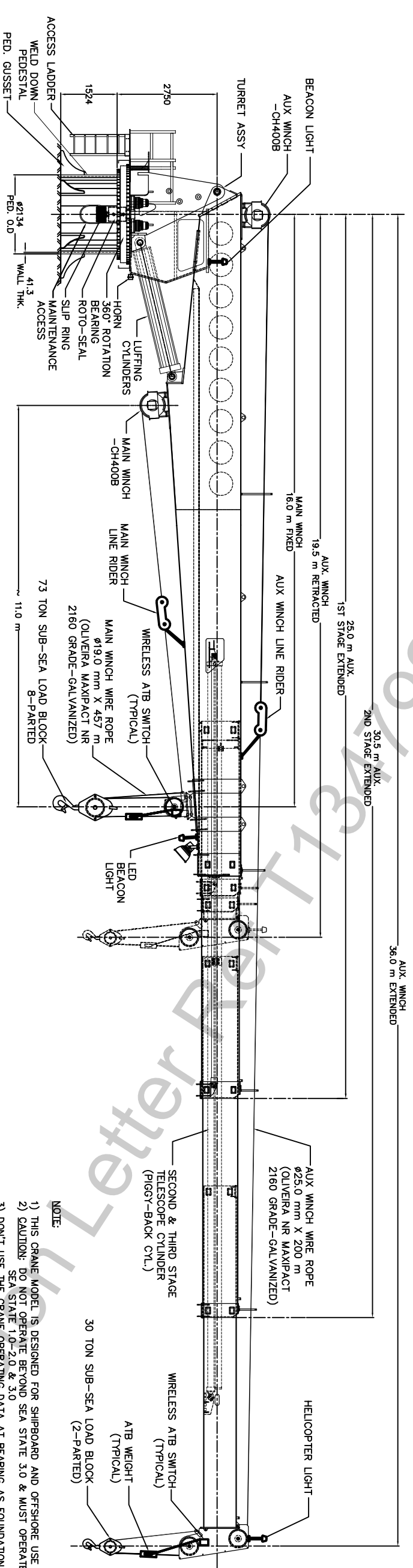
DRAWING USED ON	
DATE	CRANE MODEL NO
03/24/2015	MCT-115118-14-2062

REVISIONS		DATE	APPROVALS
ZONE	REV	DESCRIPTION	
-	1		

HOIST	MAX. SWL	SHIPBOARD
MAIN	70 mTon	70+7.0=77.0 mTon
AUX RET.	25 mTon	25.0+5.0=30.0 mTon
AUX. EXT.	17 mTon	17.0+4.25=21.25 mTon

NOTE:
 PRIOR TO FIRST USE OF CRANE, STATIC LOAD TEST TO BE CARRIED OUT AS LISTED IN TABLE. THE LOAD TEST PERFORMED WITHIN A HARBOR OR SHELTERED AREA OR IN VERY WILD ENVIRONMENTAL CONDITIONS.

MAIN HOIST - 50 m DROP CONSIDERED FROM DECK LEVEL
 AUX. HOIST - 70 m DROP CONSIDERED FROM DECK LEVEL
 MAIN HOOK SPEED - 9.0 MPM & AUX. HOOK SPEED - 28 MPM
 ABS TEST LOADS:



APPROVED
 This approval covers only ABS requirements and does not include items not required by ABS. Details of this approval are set forth in the ABS letter.

- NOTE:
- 1) THIS CRANE MODEL IS DESIGNED FOR SHIPBOARD AND OFFSHORE USE PER ABS/API STANDARDS
 - 2) CAUTION: DO NOT OPERATE BEYOND SEA STATE 3.0 & MUST OPERATE AS PROVIDED LOAD CHART VALUES FOR SEA STATE 1.0-2.0 & 3.0
 - 3) DON'T USE THE CRANE OPERATING DATA AT BEARING AS FOUNDATION DATA
 - 4) UNLESS OTHERWISE MENTIONED, ALL OTHER MEASUREMENTS ARE IN mm
 - 5) * - FOUNDATION DATA ARE FOLLOWED AS PER API SPEC. 2C RULES (WORST CASE SCENARIO); FOUNDATION REACTIONS BASED ON: (2.2174 * VERTICAL DESIGN LOAD + 1.0 DEAD LOAD)
- VERTICAL DESIGN LOAD = (1.5 * FACTORED LOAD, FL)
 FACTORED LOAD = (DYNAMIC CO-EFFICIENT * LIVE LOAD AT BOOM HEAD)

CRANE CRITICAL LIFTS	
SHIPBOARD SUPPLY:	OFFSHORE SUPPLY:(SEA STATE 1-2)
MAIN HOIST DATA:	MAIN HOIST DATA:
MAX SWL: 70.0 mTon	LOAD AT ALL RADI: 26.0 mTon
LOAD AT 16.0 m: 35.0 mTon	AUX. HOIST EXTENDED DATA: 38.0 mTon
AUX. HOIST RETRACTED DATA:	LOAD AT ALL RADI: 0.80 mTon
LOAD AT ALL RADI: 25.0 mTon	AUX. HOIST RETRACTED DATA:
AUX. HOIST EXTENDED DATA:	LOAD AT ALL RADI: 19.0 mTon
LOAD AT 36.0 m: 2.5 mTon	AUX. HOIST EXTENDED DATA: 1.7 mTon
MAX. LOAD AT 18.0 m: 17.0 mTon	MAX SWL: 13.0 mTon
	(REFER LOAD CHART FOR SEA STATE -3)
	AXIAL THRUST: 156,300 KG
	OVERTURNING MOMENT: 17,800 KN-M

6) THE PLATFORM DIMENSIONAL DETAILS & CRANE WEIGHT ARE ESTIMATED. WILL CHANGE DURING FINAL DESIGN STAGE

Drawn By: Rajesh
 Date Drawn: 03/23/2015
 Issue Date: 03/23/2015
 Checked By: Josh
 Date Checked: 03/24/2015
 Approved By: G. Adams
 Date Approved: 03/25/2015

North Pacific Crane Company, Seattle, WA 98125. ALASKAN MARINE CRANE®

GENERAL ARRANGMENT DRAWING & DATA FOR MODEL MCT3-115118

SCALE: B 31QH5 WEIGHT: # 71,700 SHEET NUMBER: 1 OF 1

GA-2062