

THE POWER OF PREPARATION



CK050F – TEMPORARY OFFSHORE CRANE

The CK050F is a telescopic knuckle boom crane, designed for offshore lifting, certified for offshore applications.

The crane allows operation of multiple functions simultaneously (slewing, luffing, lifting) and has a continuously variable speed control from zero to max speed. The crane can be disassembled into small components for easy handling.



CHARACTERISTICS

- ✓ DNV GL CERTIFIED
- ✓ 360° slew angle
- ✓ ATEX Zone II

Specification: (single fall)

Capacity: 5t - 25m/min
Reach: 5m - 22m
Hs: 0m - 2.5m

Specification: (double fall)

Capacity: 9.7t - 12m/min

System components:

- Knuckle boom crane
- ATEX Zone II
- 5t hydraulic winch
- Crane mounted on foundation skid
- 55KW electric power pack
- Remote control

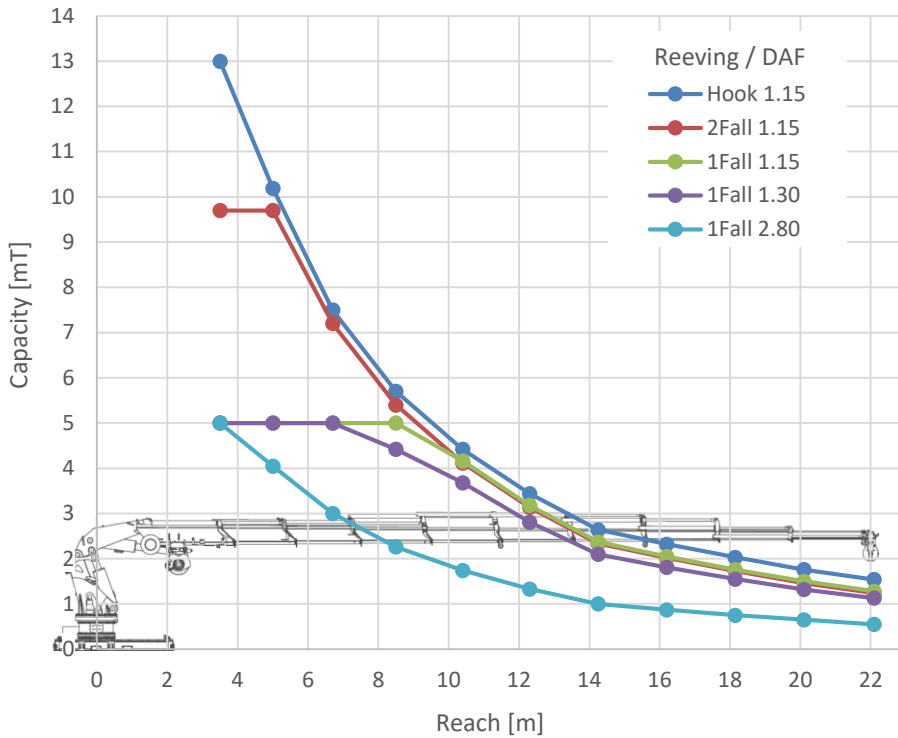
Environmental Conditions

Ambient temperature Min -20°C
Max +50°C
Humidity 85%



CK050F – TEMPORARY OFFSHORE CRANE

LOAD CHART



TECHNICAL SPECIFICATIONS

Design codes

- DNV GL-ST-0378 - Standard for offshore and platform lifting appliances
- Machinery Directive 2006/42/EC
- IEC 61892 - Mobile and fixed offshore units - Electrical installations

Safety controls

- Load limiting system (overload protection)
- AOPS / MOPS
- Main overpressure valve for safety of the whole hydraulic system
- Dead man type control levers/spring centered controls
- Failsafe control functions
- Load diagram(s)/curve(s)
- Emergency stop button(s)

Performance data

- | | |
|--------------------------------------|----------------------------------|
| • Crane type | Foldable telescopic knuckle boom |
| • Drive system | Electro hydraulic |
| • Control system | Radio remote control |
| • Luffing time full range +/- 5% (s) | 60 |
| • Slewing range | 360 |
| • Slewing speed +/- 5% (rpm) | 0.8 |
| • Max. boom angle(deg) | 78 |
| • Min boom angle(deg) | -45 |
| • Main power supply (V) | 24V DC |
| • Crane weight (kg) | 13,000 (Modular components) |

APPLICATION

The CK050F is a containerised crane which can be easily transported all over the world. It is mounted on a skid with a small footprint, making the crane suitable to install anywhere for maintenance and installation work on offshore facilities.

The crane is certified for offshore lifts up to 5t, for significant wave heights up to 2.5m, for harbor or platform lifts up to 9.7t and a hook capacity of 13t.

Application examples:

- Platform crane replacement and maintenance
- Assistance for wireline services
- Lifting of offshore modules
- Temporary crane capacity
- Lifting capacity at unmanned facilities
- Support decommissioning campaigns
- On offshore substations

Harbor conditions (DAF=1.15)

Offshore conditions Hs=0.5m (DAF=1.3)

Offshore conditions Hs=2.5m (DAF= 2.8)

