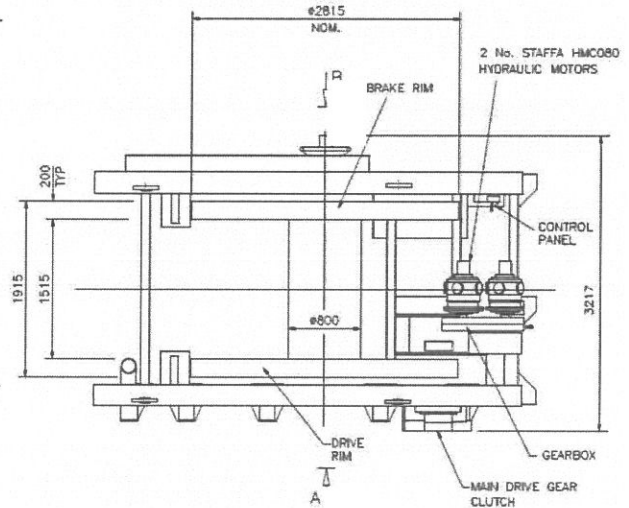
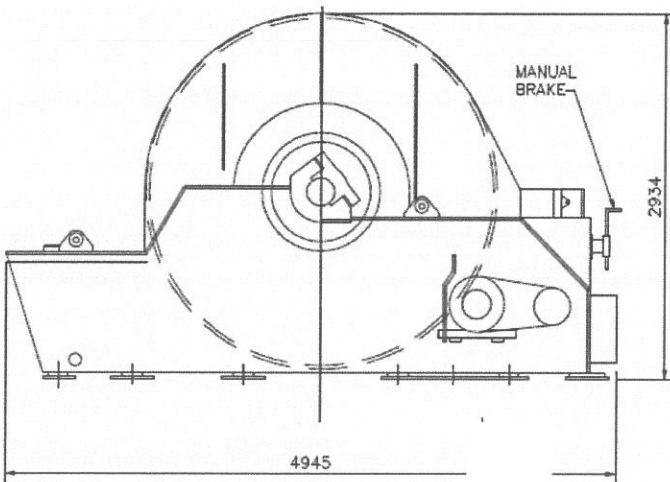


Technip

	EQUIPMENT DESCRIPTION	Page <#> of 5
	HYDRAULIC EQUIPMENT	Oracle No: 0100122
	HEAVE COMPENSATION SYSTEM (STUMPY)	Category: PHCU

EQUIPMENT PURPOSE:

This system has a dual function, it acts as a shock absorber to compensate for heave when removing explosively cut but, still attached items, such as wellheads from sea bed structures and, also as a means of controlling the reaction in the event of sudden breakage of the lifting wire. The system consists of the following, Skid frame, preloaded shock absorber ram with one fixed sheave (cylinder end) and one moving sheave (piston end), Hydraulic / Pneumatic accumulator pressurised by two air cylinders, with one stand-by cylinder, 50 ton hydraulic winch with levelwind and over boarding sheave, sub sea sheave block and hook. HW—023 or HW—025 can be used, HW—025 is shown.



GENERAL INFORMATION:

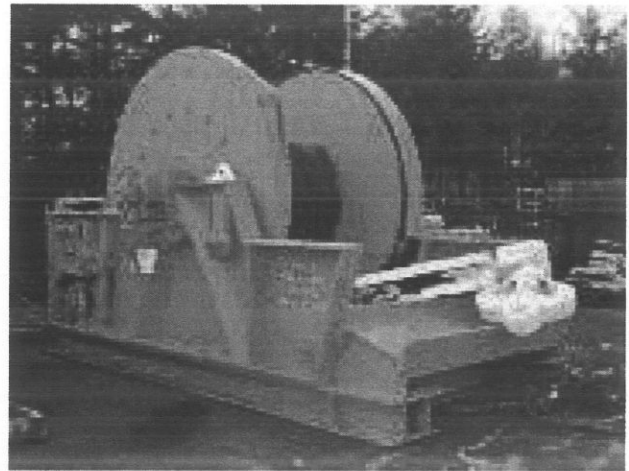
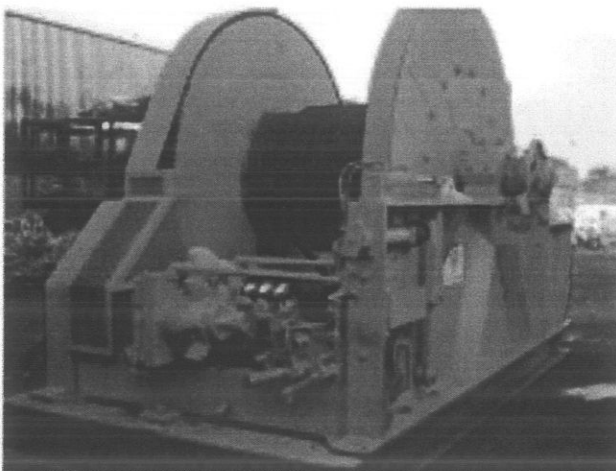
Max power : 5505nm
 Max pressure : 210bar
 Max power output : 112kw
 Consumption : 324 ltrs/min
 Weight : 20 Tons
 Wire diameter : 56mm
 Max continuous speed,
 At Max displacement : 300rpm
 At Min displacement : 1000rpm

PULLING FORCE

Line pull @ 1st layer (slow) : 60 Ton
 Line pull @ 1st layer (fast) : 12 Ton
 Line pull @ 5th layer (slow) : 50 Ton
 Line pull @ 5th layer (fast) : 11.6 Ton
 Line pull @ 14th layer (slow) : 25 Ton
 Line pull @ 14th layer (fast) : 6.5 ton

SYSTEM REFERENCE DRAWINGS:

WK-983.000-0215 HW-025 General Arrangement
 WK-983.000-0216 HW-023 General Arrangement



Document: ED-W-077	Responsibility: PS&E	Revision: 0	Date: 20/11/06
	Prepared: HCR	Checked: GEL	Approved: RMI