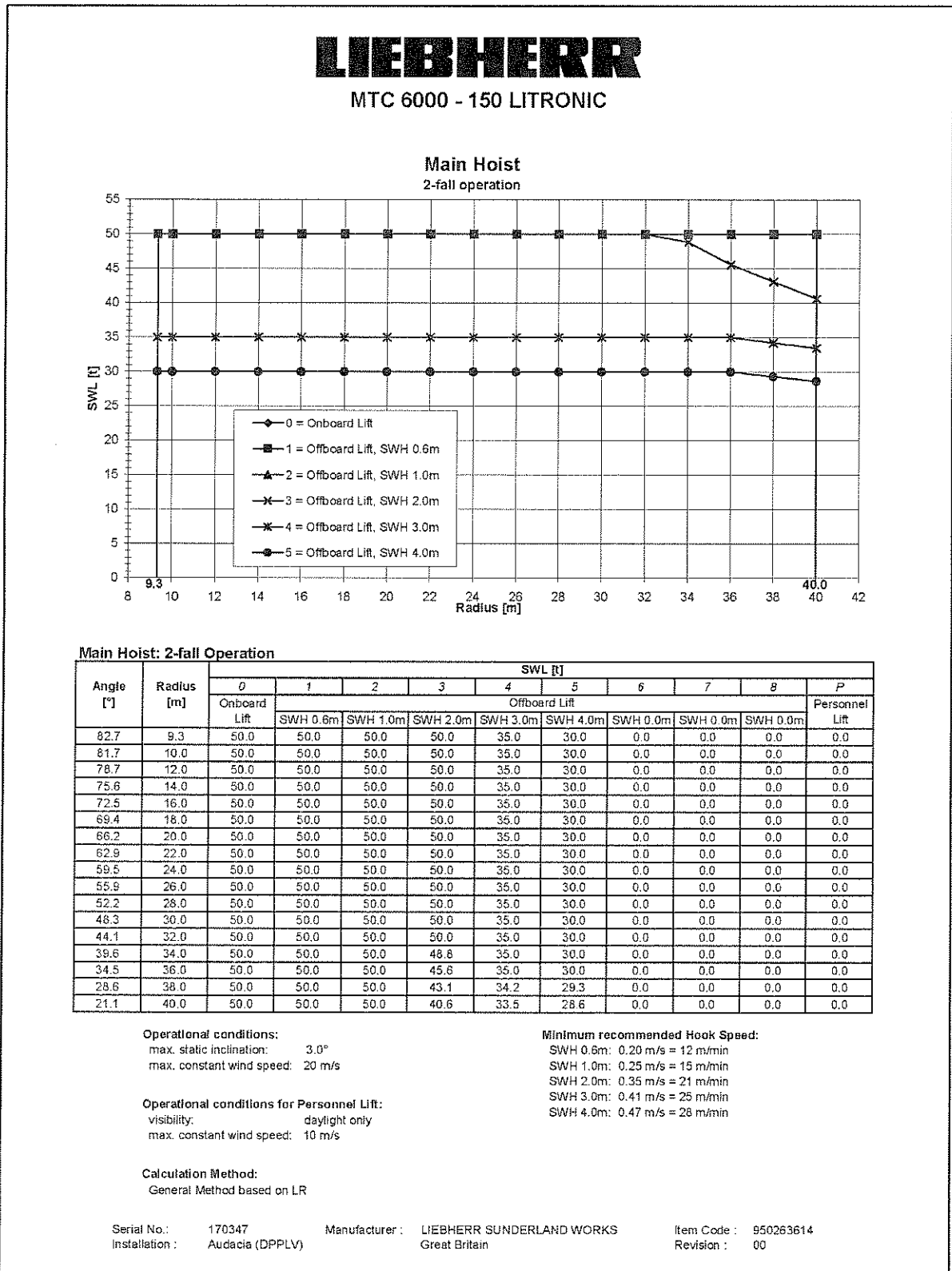


GENERAL DESCRIPTION

2.3.8. LOAD CHART - MAIN HOIST 2-FALL OPERATION

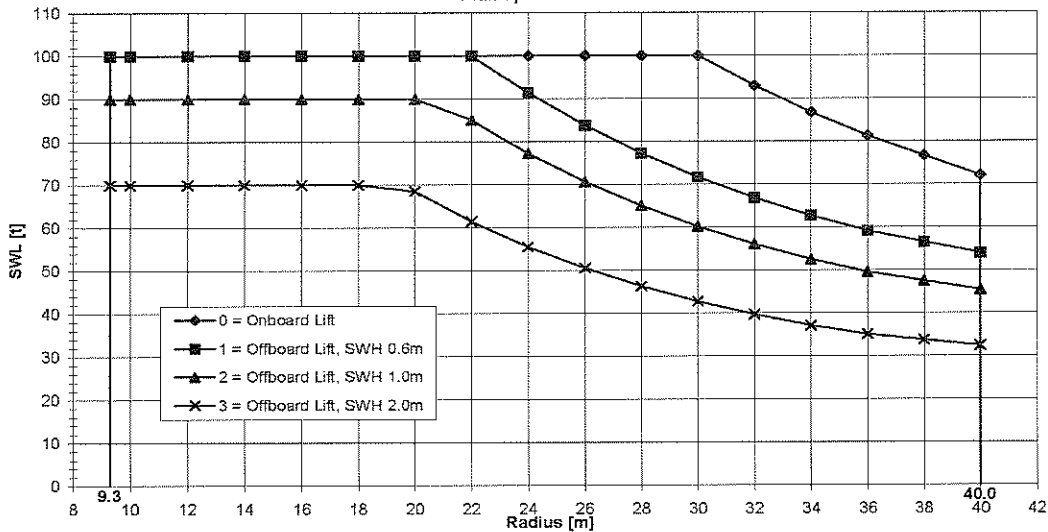


2.3.9. LOAD CHART - MAIN HOIST 4-FALL OPERATION

LIEBHERR

MTC 6000 - 150 LITRONIC

Main Hoist
4-fall operation



Main Hoist: 4-fall Operation

Angle [°]	Radius [m]	SWL [t]										Personnel Lift
		0	1	2	3	4	5	6	7	8	P	
		Onboard Lift	Offboard Lift									
		SWH 0.6m	SWH 1.0m	SWH 2.0m	SWH 0.0m	SWH 0.0m	SWH 0.0m	SWH 0.0m	SWH 0.0m	SWH 0.0m		
82.7	9.3	100.0	100.0	90.0	70.0	0.0	0.0	0.0	0.0	0.0	0.0	0.0
81.7	10.0	100.0	100.0	90.0	70.0	0.0	0.0	0.0	0.0	0.0	0.0	0.0
78.7	12.0	100.0	100.0	90.0	70.0	0.0	0.0	0.0	0.0	0.0	0.0	0.0
75.6	14.0	100.0	100.0	90.0	70.0	0.0	0.0	0.0	0.0	0.0	0.0	0.0
72.5	16.0	100.0	100.0	90.0	70.0	0.0	0.0	0.0	0.0	0.0	0.0	0.0
69.4	18.0	100.0	100.0	90.0	70.0	0.0	0.0	0.0	0.0	0.0	0.0	0.0
66.2	20.0	100.0	100.0	90.0	68.5	0.0	0.0	0.0	0.0	0.0	0.0	0.0
62.9	22.0	100.0	100.0	85.1	61.5	0.0	0.0	0.0	0.0	0.0	0.0	0.0
59.5	24.0	100.0	91.4	77.3	55.6	0.0	0.0	0.0	0.0	0.0	0.0	0.0
55.9	26.0	100.0	83.8	70.7	50.6	0.0	0.0	0.0	0.0	0.0	0.0	0.0
52.2	28.0	100.0	77.3	65.1	46.3	0.0	0.0	0.0	0.0	0.0	0.0	0.0
48.3	30.0	100.0	71.7	60.2	42.8	0.0	0.0	0.0	0.0	0.0	0.0	0.0
44.1	32.0	93.0	66.9	56.1	39.7	0.0	0.0	0.0	0.0	0.0	0.0	0.0
39.6	34.0	86.8	62.7	52.5	37.2	0.0	0.0	0.0	0.0	0.0	0.0	0.0
34.5	36.0	81.3	59.1	49.6	35.1	0.0	0.0	0.0	0.0	0.0	0.0	0.0
28.6	38.0	76.7	56.6	47.5	33.7	0.0	0.0	0.0	0.0	0.0	0.0	0.0
21.1	40.0	72.1	54.0	45.4	32.4	0.0	0.0	0.0	0.0	0.0	0.0	0.0

Operational conditions:

max. static inclination: 3.0°
max. constant wind speed: 20 m/s

Minimum recommended Hook Speed:

SWH 0.6m: 0.20 m/s = 12 m/min
SWH 1.0m: 0.25 m/s = 15 m/min
SWH 2.0m: 0.35 m/s = 21 m/min

Operational conditions for Personnel Lift:

visibility: daylight only
max. constant wind speed: 10 m/s

Calculation Method:

General Method based on LR

Serial No.: 170347
Installation: Audacia (DPPLV)

Manufacturer: LIEBHERR SUNDERLAND WORKS
Great Britain

Item Code: 950263614
Revision: 00

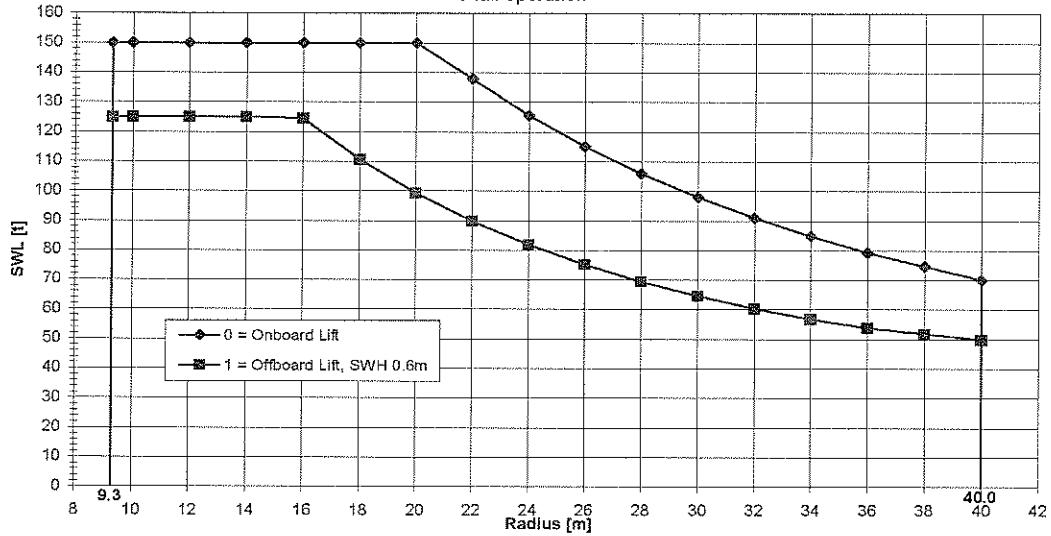
GENERAL DESCRIPTION

2.3.10. LOAD CHART - MAIN HOIST 6-FALL OPERATION

LIEBHERR

MTC 6000 - 150 LITRONIC

Main Hoist
6-fall operation



Main Hoist: 6-fall Operation

Angle [°]	Radius [m]	SWL [t]										Personnel Lift
		0 Onboard Lift	Offboard Lift								P	
			1 SWH 0.6m	2 SWH 0.0m	3 SWH 0.0m	4 SWH 0.0m	5 SWH 0.0m	6 SWH 0.0m	7 SWH 0.0m	8 SWH 0.0m		
82.7	9.3	150.0	125.0	0.0	0.0	0.0	0.0	0.0	0.0	0.0	0.0	0.0
81.7	10.0	150.0	125.0	0.0	0.0	0.0	0.0	0.0	0.0	0.0	0.0	0.0
78.7	12.0	150.0	125.0	0.0	0.0	0.0	0.0	0.0	0.0	0.0	0.0	0.0
75.6	14.0	150.0	125.0	0.0	0.0	0.0	0.0	0.0	0.0	0.0	0.0	0.0
72.5	16.0	150.0	124.5	0.0	0.0	0.0	0.0	0.0	0.0	0.0	0.0	0.0
69.4	18.0	150.0	110.6	0.0	0.0	0.0	0.0	0.0	0.0	0.0	0.0	0.0
66.2	20.0	150.0	99.3	0.0	0.0	0.0	0.0	0.0	0.0	0.0	0.0	0.0
62.9	22.0	137.8	89.8	0.0	0.0	0.0	0.0	0.0	0.0	0.0	0.0	0.0
59.5	24.0	125.5	81.9	0.0	0.0	0.0	0.0	0.0	0.0	0.0	0.0	0.0
55.9	26.0	115.0	75.2	0.0	0.0	0.0	0.0	0.0	0.0	0.0	0.0	0.0
52.2	28.0	105.9	69.4	0.0	0.0	0.0	0.0	0.0	0.0	0.0	0.0	0.0
48.3	30.0	98.0	64.5	0.0	0.0	0.0	0.0	0.0	0.0	0.0	0.0	0.0
44.1	32.0	91.0	60.4	0.0	0.0	0.0	0.0	0.0	0.0	0.0	0.0	0.0
39.6	34.0	84.8	56.8	0.0	0.0	0.0	0.0	0.0	0.0	0.0	0.0	0.0
34.5	36.0	79.3	53.8	0.0	0.0	0.0	0.0	0.0	0.0	0.0	0.0	0.0
28.6	38.0	74.7	51.8	0.0	0.0	0.0	0.0	0.0	0.0	0.0	0.0	0.0
21.1	40.0	70.1	49.8	0.0	0.0	0.0	0.0	0.0	0.0	0.0	0.0	0.0

Operational conditions:
max. static inclination: 3.0°
max. constant wind speed: 20 m/s

Minimum recommended Hook Speed:
SWH 0.6m: 0.20 m/s = 12 m/min

Operational conditions for Personnel Lift:
visibility: daylight only
max. constant wind speed: 10 m/s

Calculation Method:
General Method based on LR

Serial No.: 170347
Installation: Audacia (DPPLV)

Manufacturer: LIEBHERR SUNDERLAND WORKS
Great Britain

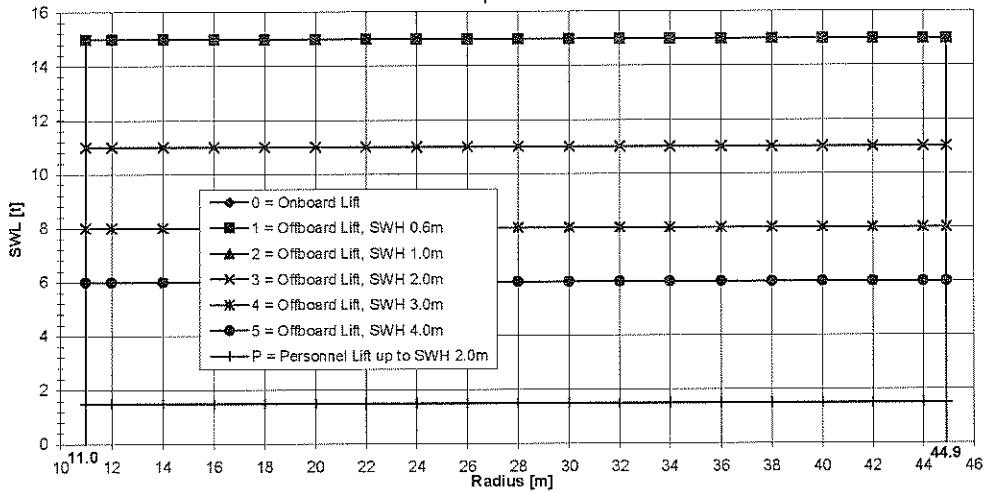
Item Code: 950263614
Revision: 00

2.3.11. LOAD CHART - AUXILIARY HOIST

LIEBHERR

MTC 6000 - 150 LITRONIC

Auxiliary Hoist 1-fall operation



Auxiliary Hoist: 1-fall Operation

Angle [°]	Radius [m]	SWL [t]									
		0	1	2	3	4	5	6	7	8	P
		Onboard Lift	Offboard Lift								
		SWH 0.6m	SWH 1.0m	SWH 2.0m	SWH 3.0m	SWH 4.0m	SWH 0.0m	SWH 0.0m	SWH 0.0m	SWH 0.0m	
82.7	11.0	15.0	15.0	15.0	11.0	8.0	6.0	0.0	0.0	0.0	1.5
81.3	12.0	15.0	15.0	15.0	11.0	8.0	6.0	0.0	0.0	0.0	1.5
78.7	14.0	15.0	15.0	15.0	11.0	8.0	6.0	0.0	0.0	0.0	1.5
75.9	16.0	15.0	15.0	15.0	11.0	8.0	6.0	0.0	0.0	0.0	1.5
73.2	18.0	15.0	15.0	15.0	11.0	8.0	6.0	0.0	0.0	0.0	1.5
70.4	20.0	15.0	15.0	15.0	11.0	8.0	6.0	0.0	0.0	0.0	1.5
67.5	22.0	15.0	15.0	15.0	11.0	8.0	6.0	0.0	0.0	0.0	1.5
64.6	24.0	15.0	15.0	15.0	11.0	8.0	6.0	0.0	0.0	0.0	1.5
61.6	26.0	15.0	15.0	15.0	11.0	8.0	6.0	0.0	0.0	0.0	1.5
58.4	28.0	15.0	15.0	15.0	11.0	8.0	6.0	0.0	0.0	0.0	1.5
55.2	30.0	15.0	15.0	15.0	11.0	8.0	6.0	0.0	0.0	0.0	1.5
51.8	32.0	15.0	15.0	15.0	11.0	8.0	6.0	0.0	0.0	0.0	1.5
48.3	34.0	15.0	15.0	15.0	11.0	8.0	6.0	0.0	0.0	0.0	1.5
44.5	36.0	15.0	15.0	15.0	11.0	8.0	6.0	0.0	0.0	0.0	1.5
40.4	38.0	15.0	15.0	15.0	11.0	8.0	6.0	0.0	0.0	0.0	1.5
35.9	40.0	15.0	15.0	15.0	11.0	8.0	6.0	0.0	0.0	0.0	1.5
30.8	42.0	15.0	15.0	15.0	11.0	8.0	6.0	0.0	0.0	0.0	1.5
24.6	44.0	15.0	15.0	15.0	11.0	8.0	6.0	0.0	0.0	0.0	1.5
21.1	44.9	15.0	15.0	15.0	11.0	8.0	6.0	0.0	0.0	0.0	1.5

Operational conditions:
 max. static inclination: 3.0°
 max. constant wind speed: 20 m/s

Operational conditions for Personnel Lift:
 visibility: daylight only
 max. constant wind speed: 10 m/s

Calculation Method:
 General Method based on LR

Minimum recommended Hook Speed:

SWH 0.6m: 0.20 m/s = 12 m/min
 SWH 1.0m: 0.25 m/s = 15 m/min
 SWH 2.0m: 0.35 m/s = 21 m/min
 SWH 3.0m: 0.41 m/s = 25 m/min
 SWH 4.0m: 0.47 m/s = 28 m/min

Serial No.: 170347
 Installation: Audacia (DPPLV)

Manufacturer: LIEBHERR SUNDERLAND WORKS
 Great Britain

Item Code: 950263614
 Revision: 00