

ACCOMMODATION PACKAGE (2 EACH) FOR 120 PERSONS EACH

General Description

Accommodation Package for marine applications with a nominal capacity of 120 persons that can be extended up to 170 persons, including all-aluminum helideck, built under the Norm CAP-437 and capable of receiving a Bell-412 helicopter.

Each package is integrated by 30 modules (40' x 10' x 11.6' each) with a total footprint of 2,400 sqft., plus an additional area required for the stair towers on both sides.

Engineering, Structural, Electrical, Architectural and F&G drawings are all included.

Building

Accommodation Package for **120 persons**
Total of **30 integrated modules**
Total weight: **474 MT**

Design

Suited for Offshore Application
Designed to be installed on deck at an offshore unit (fixed or mobile) or to be erected ashore

Dimensions

Front **60 feet** (6 Modules 10 feet each)
Width **40 feet**
Height **50 feet** (5 Levels of 10 feet each)

Outfitting and Layout

- HVAC throughout the Package (Mini-Split Modules)
- Recreation Area
- Kitchen
- Mess Room for 48 persons
- Meeting Room for 15 persons
- Gym
- OIM Private Room with access to his Office
- Manager Office
- Medic Room with access to the Treatment Room
- Supervisors' Offices

- Client Offices
- Public Address System
- Data and Voice Network
- Satellite TV
- Closed Circuit TV System (CCTV)
- Fire and Gas Detection System
- Control Room
- Reverse Osmosis Potable Water-maker (Redundant)
- Potable Water Storage Tanks
- Lifeboats and Lifesaving Equipment

Total Beds

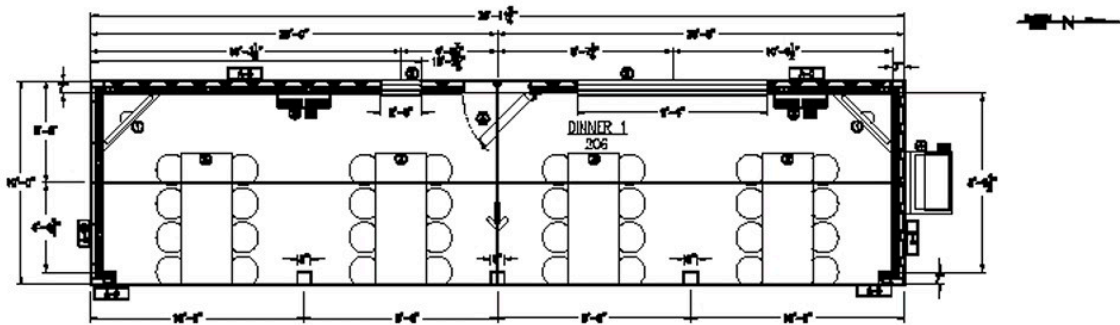
Floor	Beds
First Floor	0
Second Floor	4
Third Floor	48
Fourth Floor	48
Fifth Floor	20
Total	120

Detailed Information of Modules

First Floor	Total of 6 Modules 10' x 40' x 11.6' Height		0 Beds
	Module A1	Redundant Potable Water-Maker; Pumping System; (2) two Potable Water Tanks 145 bbls.	---
	Module A2	Redundant Potable Water Pressure Unit + (1) one Potable Water Tank 465 bbls.	---
	Module A3	Electric Room and Electric Control Room.	---
	Module A4	Locker Room + Gym.	---
	Module A5	Laundry + General Wash Rooms & Showers.	---
	Module A6	Meeting Room (for 6 persons) + Recreation Room (for 15 persons).	---
Second Floor	Total of 6 Modules 10' x 40' x 11.6' Height		4 Beds
	Module A7	Dry Storage Area + Cabin for 4 persons (Beds, Sanitary & Shower).	4
	Module A8	Walk-In Freezer x 960 Ft ³ + Walk-In Cooler x 960 Ft ³	---
	Module A9	Industrial Kitchen.	---
	Module A10	Section 1 of Mess Room (for 48 persons).	---
	Module A11	Section 2 of Mess Room.	---
	Module A12	Medic's Office and Treatment Room (Bed; Sanitary & Shower)	---



Third Floor	Total of 6 Modules 10' x 40' x 11.6' Height (2 Cabins with 4 Beds each per Module)		48 Beds
	Module A13	(2) Two Cabins for 4 persons each (Beds, Sanitary & Shower).	8
	Module A14	(2) Two Cabins for 4 persons each (Beds, Sanitary & Shower).	8
	Module A15	(2) Two Cabins for 4 persons each (Beds, Sanitary & Shower).	8
	Module A16	(2) Two Cabins for 4 persons each (Beds, Sanitary & Shower).	8
	Module A17	(2) Two Cabins for 4 persons each (Beds, Sanitary & Shower).	8
	Module A18	(2) Two Cabins for 4 persons each (Beds, Sanitary & Shower).	8
Fourth Floor	Total of 6 Modules 10' x 40' x 11.6' Height (2 Cabins with 4 Beds each per Module)		48 Beds
	Module A19	(2) Two Cabins for 4 persons each (Beds, Sanitary & Shower).	8
	Module A20	(2) Two Cabins for 4 persons each (Beds, Sanitary & Shower).	8
	Module A21	(2) Two Cabins for 4 persons each (Beds, Sanitary & Shower).	8
	Module A22	(2) Two Cabins for 4 persons each (Beds, Sanitary & Shower).	8
	Module A23	(2) Two Cabins for 4 persons each (Beds, Sanitary & Shower).	8
	Module A24	(2) Two Cabins for 4 persons each (Beds, Sanitary & Shower).	8
Fifth Floor	Total of 6 Modules 10' x 40' x 11.6' Height		20 Beds
	Module A25	Radio Room + Cabin for 4 persons (Beds, Sanitary & Shower).	4
	Module A26	Office for 3 persons + Cabin for 1 person (Bed, Sanitary & Shower).	1
	Module A27	Office for 3 persons + Cabin for 2 persons (Bed, Sanitary & Shower).	2
	Module A28	Office for 3 persons + Cabin for 1 person (Bed, Sanitary & Shower).	1
	Module A29	Cabin for 4 persons (Beds, Sanitary & Shower) + Cabin for 2 persons (Bed, Sanitary & Shower).	6
	Module A30	Cabin for 4 persons (Beds, Sanitary & Shower) + Cabin for 2 persons (Bed, Sanitary & Shower).	6



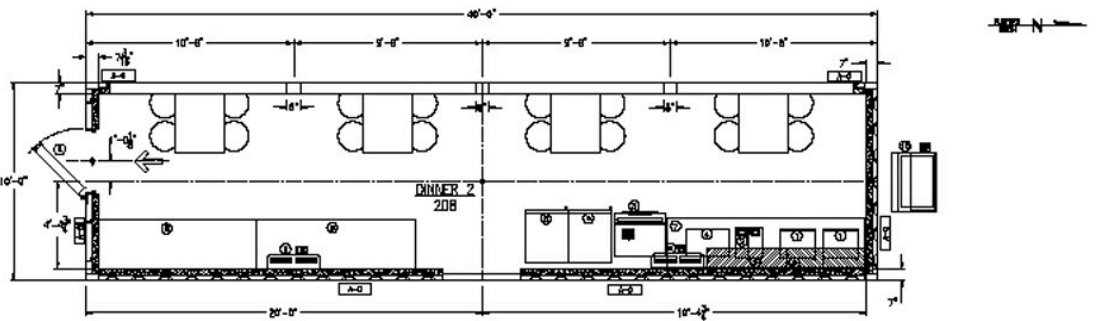
DINNER #1 ROOM
ARCHITECTURAL FLOOR PLAN

EQUIPMENT	
NO.	DESCRIPTION
1	...
2	...
3	...
4	...
5	...
6	...
7	...
8	...
9	...
10	...

DOOR	
NO.	DESCRIPTION
1	...
2	...
3	...

TYPICAL FINISH SCHEDULE					
NO.	DESCRIPTION	FINISH	PAINT	GLASS	NOTES
A-0	4" A-01 WALL PANEL SYSTEM, 3/4" CORE PLATE				
A-01	4" A-01 WALL PANEL SYSTEM, 3/4" CORE PLATE	4" A-01 WALL PANEL SYSTEM, 3/4" CORE PLATE	SPCC FLOOR FINISH, 1/4" FLOOR PLATE, 1" PARQUET FLOOR	1/4" FLOOR FINISH, 1/4" FLOOR PLATE, 1" PARQUET FLOOR	1" MICHIGAN WALL, 1/4" MICHIGAN WALL, 3/4" PLATE
B-01		4" B-01 WALL PANEL SYSTEM, 3/4" CORE PLATE			
B-02		4" B-01 WALL PANEL SYSTEM, 3/4" CORE PLATE			

NOTE: ALL WALL FINISH SYSTEM SHALL BE FINISHED 4'-0" OVER THE CEILING.



DINNER #2 ROOM
ARCHITECTURAL FLOOR PLAN

EQUIPMENT	
NO.	DESCRIPTION
1	...
2	...
3	...
4	...
5	...
6	...
7	...
8	...
9	...
10	...

DOOR	
NO.	DESCRIPTION
1	...
2	...

TYPICAL FINISH SCHEDULE					
NO.	DESCRIPTION	FINISH	PAINT	GLASS	NOTES
A-0	4" A-01 WALL PANEL SYSTEM, 3/4" CORE PLATE				
A-01	4" A-01 WALL PANEL SYSTEM, 3/4" CORE PLATE	4" A-01 WALL PANEL SYSTEM, 3/4" CORE PLATE	SPCC FLOOR FINISH, 1/4" FLOOR PLATE, 1" PARQUET FLOOR	1/4" FLOOR FINISH, 1/4" FLOOR PLATE, 1" PARQUET FLOOR	1" MICHIGAN WALL, 1/4" MICHIGAN WALL, 3/4" PLATE
B-01		4" B-01 WALL PANEL SYSTEM, 3/4" CORE PLATE			
B-02		4" B-01 WALL PANEL SYSTEM, 3/4" CORE PLATE			

NOTE: ALL WALL FINISH SYSTEM SHALL BE FINISHED 4'-0" OVER THE CEILING.

--	--	--

Fabrication

Fabrication and outfitting to meet the highest standards for Modular Living Quarters for offshore application. All materials and equipment, fixtures, appliances and furniture are new.

Fabrication shall be per below listed details.

1. Structural (Steel Fabrication)

- a. Exterior wall panels shall be “B” crimped; 3/16” thick steel plate.
- b. Wide Flange Steel Skid Members.
- c. 1/4” thick steel plate for floor.
- d. 3/16” thick steel plate for roof.
- e. Tubular framing structural members for exterior walls with ISO connectors located at each corner.
- f. Steel roof and floor joists framing members.
- g. All welded construction as per AWS D1.1.
- h. All external welds on crimp plate to steel structure shall be continuous seal welds.
- i. Welds inside the building crimp plate to steel structure shall be intermittently welds 75mm x 75mm (3” x 3” steps).
- j. All penetrations or attachments to the building shell shall be fully seal welded.
- k. All openings in exterior walls shall be framed.
- l. Openings in the buildings for doors shall be framed with structural steel shape.
- m. Over each external door a fully seal welded gutter shall be provided to direct water to each side of the doorway.
- n. Lifting lugs / with ISO connectors located at each corner

2. Architectural

- a. Walls:
The interior bulkheads shall be constructed using Insulated Tracked Panels.
- b. Flooring:
Steel deck to be prepped and primed Ameron PPG Coatings. Epoxy Floor System; custom color sand, flexible seamless epoxy flooring system.
- c. Ceiling:
Shall be constructed using a suspended aluminum-capped steel grid system with 2’ x 2’ Armstrong Ceram guard ceiling tiles installed in the grid. ABS & USCG Approved.
- d. Shower. Integrated package.
- e. Doors
 1. Interior: B-15 Rated steel, w/ insulation; 2868 or Larger.
 2. Exterior: A60 Rated steel doors; 3070 (with window where specified).
 3. Restroom: Aluminum frame, laminated door; 2668.
- f. Windows

1. Exterior: A-60 Rated; 3040 (where applicable).
- g. The exterior of the buildings shall be designed and suitable for operating in a marine corrosive environment.

3. Electrical

A. Lighting System

1. Interior lighting:
 - a. 2'x4' Fluorescent Lay-in fixtures, 2x32w T8 lamps, electronic ballast, 120/277V (Qty. As required).
 - b. 2'x2' Fluorescent Lay-in fixtures, 2x32w T8 lamps, electronic ballast, 120/277V (Qty. As required).
 - c. 18" Fluorescent Bunk lights, 1x15W T8 Lamp, electronic ballast.
 - d. 18" Fluorescent Mirror lights, 1x15W T8 Lamp, electronic ballast.
 - e. LED Exit lights with 90 min battery backup.
 - f. 2 Heads Emergency Lights with 90 min battery backup.
2. Exterior Lighting:
 - a. 4' LED wall mount Class 1, Div 2 marine type, 2 lamps 32W to be installed on each main exit door.
 - b. 120V, Class 1, Div 2 LED wall mount, marine type fixture RAL # CVP Series, installed on each end wall.

B. Switches and Receptacles

1. 20A, 120V Duplex Receptacles industrial grade (Qty. to be supplied as required).
2. 20A, 120V GFI Duplex Receptacles industrial grade to be installed in wet area locations such as: bathrooms, galley and laundry.
3. 20A, 120V, Single and 3w switches (Qty. to be supplied as required).
4. 20A, 120V, Class 1, Div 2 Single receptacles shall be installed on Auxiliary Equipment Modules at distribution equipment (Level of services).

C. GEAR

1. Each building must have a lighting panel with MCB different sizes based on the load per building, the panels shall be 1 ph, 240V, 60Hz.
2. Galley Module shall have a 225A, 3PH, 4w Panel board.
3. Laundry Module shall have a 150A, 3PH, 4W Panel board.

D. The Main Distribution Equipment:

1. (1) 800A, 600V, 3PH Distribution Panel board.
2. (2) 225KVA, 600-208/120VAC, 3PH NEMA 3R Dry Type Ventilated Transformers.
3. (2) 800A, 208/120VAC, 3PH, 4W Distribution Panels boards.
4. (1) 208/120V Plug board with Power receptacles and Plugs Installed.

5. 600 V Plug Board.
6. 480 V Plug Board.
7. 208/120 V Plug Board.
8. Electric feeders.
9. (1) 225KVA, 600/480, 3PH Dry Type.
10. (1) 400A, 480V, 3PH Panel board.
11. (1) 75KVA, 480/208-120V, 3PH, Dry Type Transf. (Galley).

4. Fire and Gas Detection System

A Complete Industry Standard Addressable Fire & Gas Detection System is included and is as follows:

- a. Notifier Smoke Detectors
- b. Notifier Heat Detectors
- c. Notifier Manual Pull Stations
- d. Notifier Addressable Fire Panel
- e. Notifier Relay Modules
- f. Combustible Gas Detectors
- g. H2S Toxic Gas Detectors
- h. Addressable Gas Panel
- i. Sets of (6) Status-Strobe Lights as required
- j. NEMA 4X enclosures
- k. Engineering and Commissioning

5. Fire-Fighting System

- a. Dry Chemical Powder Extinguishers (minimum of 10 lb. or 20 lb. as req.)
- b. CO2 Extinguishers
- c. ANSUL System in Galley
- d. Hose and reels on each stair towers at each level.
- e. Life Jackets, for 150% occupancy.
- f. (2) FM200 Extinguishing systems (One for Electric Control Building and One for Radio Room)

6. Communications System

- a. PAGA System
- b. PABX System
- c. CCTV system
- d. TV Satellite - Radio - WiMax System
- e. Redundant UPS System

7. Pre-Wired for Voice & Data, TV.

- a. Duplex outlets with RJ45 plugs to be installed at each Office, Recreation Room, and Clinic.

- b. TV outlets shall be installed at Rec. Room, Dining Room, and Gym. TVs provided for Recreation and Dining Rooms.

Note: Voice, Data, and TV systems to be prewired by LSEF. Equipment to be provided by others for local use.

Electrical Notes:

- a. All Indoors and outdoors cable shall be type “P” Unarmored Marine Shipboard.
- b. All electrical System Shall meet NEC Standards, latest Edition.
- c. Cable Tray where is required shall be Galvanized NEMA 20C.

8. Mechanical - HVAC

- a. General Sleeper Modules; Mini Split-Units; Multi Zone; 36,000 BTUs.
- b. Galley Module; Mini-Split Units; Dual Zone; 36,000 BTUs.
- c. Laundry Module: Mini-Split Units; Dual Zone; 36,000 BTUs.
- d. 4-Men and Office Module; Mini-Split Units; Multi Zone; 36,000 BTUs.
- e. HVAC units are ductless; air Handlers shall be installed in their respective rooms.
- f. Condenser Unit Shall be installed the module walkways.
- g. HVAC are Non-Classified.

9. Plumbing

- a. Black Drain Lines: PVC Schedule 40.
- b. Gray Drain lines: PVC Schedule 40.
- c. Potable Water: CPVC.
- d. Floor drains where required.
- e. Fixtures:
 - 1. Porcelain Toilets: complete with flush valves and partition.
 - 2. Porcelain Urinals.
 - 3. Water Heaters.
 - 4. Fiber glass Showers (Wet Units bathrooms).

10. Medical Services/Clinic

To include a full bathroom for patients at the same level and have accessible location (door at pipe rack level).

Furnished as additional equipment:

- a. Exam Table, Light, and Stool.
- b. Lockable Cabinet and Refrigerator.
- c. (1) Stretcher.

11. Auxiliary Equipment

- a. (2) Water Makers - Sea Recovery; Reverse Osmosis 60m³/day each.

- b. (1) Dual Pump pressure set, w/ bladder tank, chlorinating meter pump.
- c. (1) 2-Hp Macerator.

Note: Service and Transfer Pumps are not included.

12. Coating System

- a. Steel shall be blasted to a near white immediately prior to application of primer.
- b. Exterior Coating:
Painted with PPG three coat epoxy and urethane system for offshore service.
- c. Interior:
Primer - 5 mills epoxy

13. Other

- a. Stair Towers - Five levels as per drawings and requirements, with 3” standpipe on each stair tower. Equipment Skid side Stair Tower to be open construction. Off Equipment Skid side to be enclosed, insulated, and environmentally conditioned.
- b. Walkways and Handrails - five levels as per drawings and requirements.
- c. Office and Recreation Room Furniture, Gym Equipment, Washers, Dryers; Galley Equipment, Serving Table and Refreshment Dispensers, Water Heaters, Lockers, Bunk Beds, and Mattresses shall be furnished per drawings.
- d. Audible Freezer/Cooler Man Trapped Alarm.
- e. Life Boats 2x60 Man for 120 Man and Davits.
- f. Davits and required equipment.

14. Exclusions

- a. Sea-water supplied by Others up to the limits of the Service level-building
- b. Electric Source Supplied (600V) by Others up the electric Panel on the Services building.
- c. On-site Installation-Erection / Assembly.
- d. Transportation to sea site.
- e. Access Control.
- f. Medical Instruments/Devices.
- g. Linens & Misc. Galley/Dining Utensils.



**EDIFICIO HABITACIONAL PARA 120 PERSONAS, VISTA QUE DA AL FRENTE DE AGUA.
(2-PESCANTES PARA BOTES SALVAVIDAS)**



Vista Posterior de Modulo Habitacional para 120 Personas







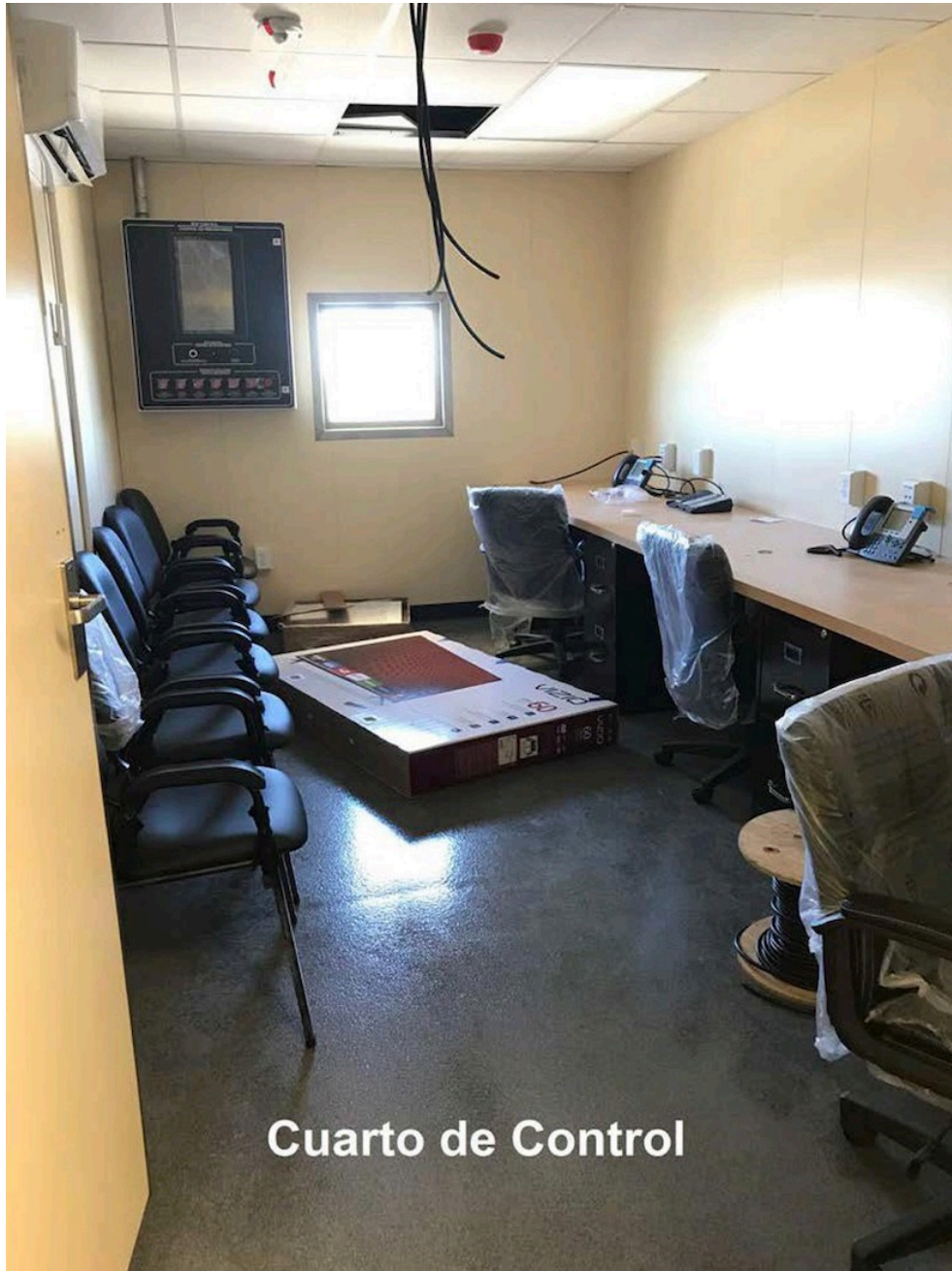


Puerta de Acceso con Semáforo de Seguridad.



**Pasillo de Interconexión
con Luces de Semáforo
de Seguridad**



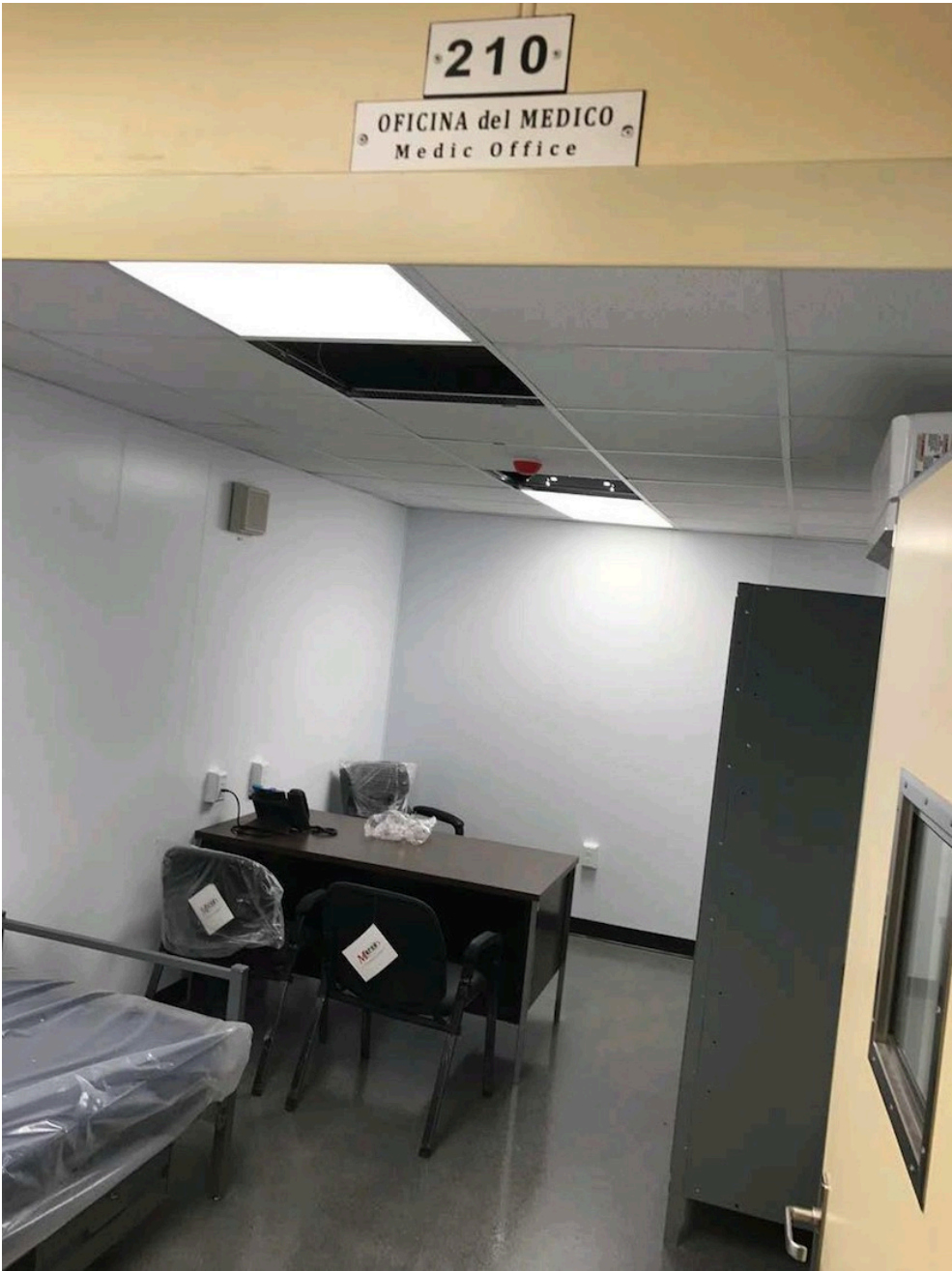


Cuarto de Control



Sala de Juntas para 6 Personas







Consultorio-Tratamiento Médico





Cabina para 2 Personas.











Cocina Industrial

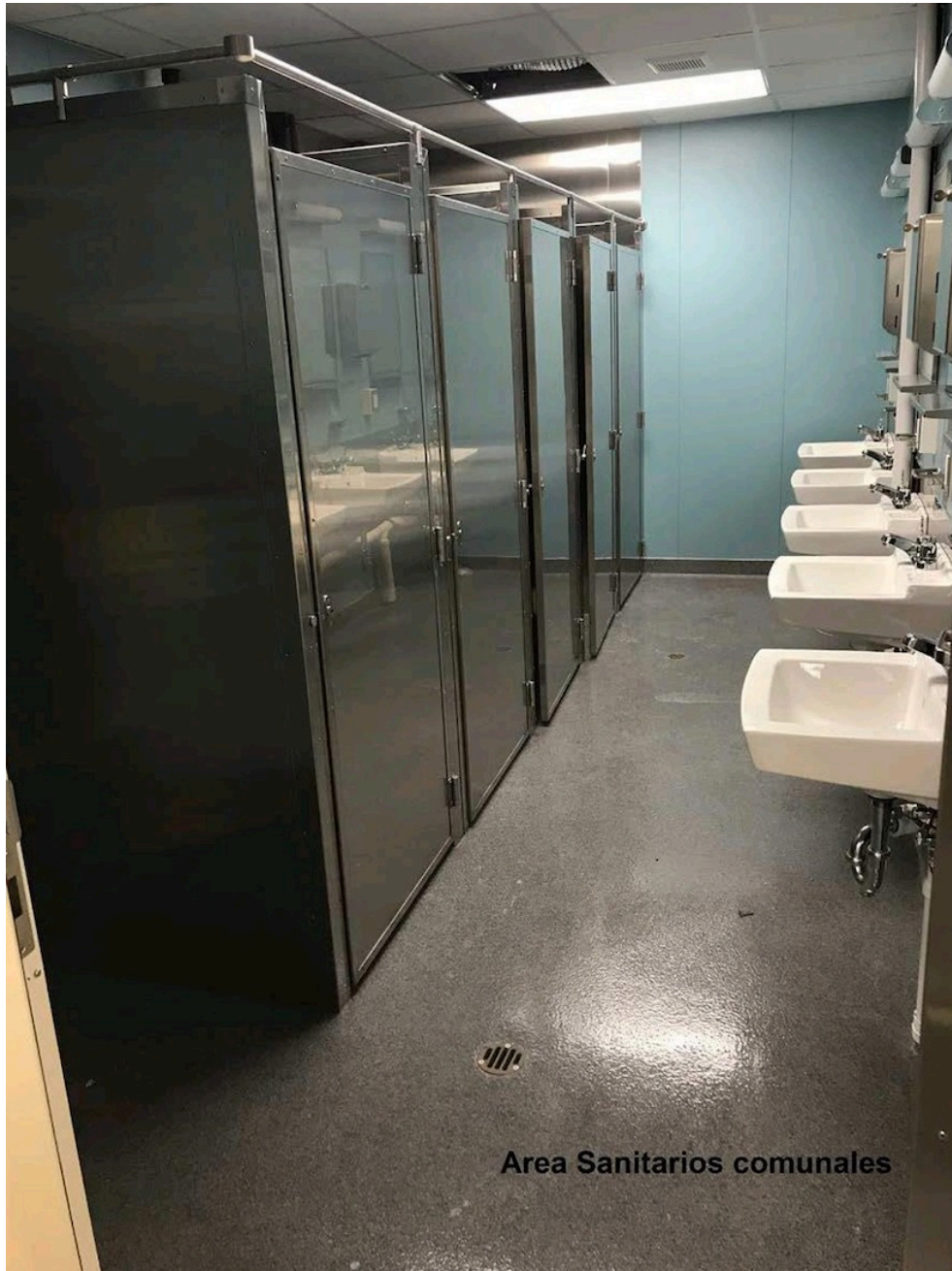








Area GYM



Area Sanitarios comunales



Cuarto Eléctrico con Sistema Extinción de Fuego FM-200







