



DAMEN MODULAR PUSHER 1807 (NEW-OLD-STOCK)

Type	DAMEN Modular Pusher 1807
Built	2013, new old stock
Dimensions	20.00 x 7.40 x 1.80 mtrs
Length pontoon	18.00 mtrs
Draft	0.90 mtr
Maximum deck load	6.8 ts/m ²
Main engines	2x diesel driven deck mountable propulsion units
Output	600 bhp total at 2200 rpm
Generator set	20 kVA, 24/230 V
Speed	6 knots
Deck equipment	2x bilge / deck wash / fifi pump, anchor, anchor winch, 4x bollard, 2x pushbow with single bollard, 4x flat bollard, 2x coupling winch
Tank capacities	Fuel oil 2x 7.2 m ³ Fresh water 4.6 m ³ Ballast water 2x 7.4 m ³
Nav./comm. equipment	As per class regulations.
Accommodation	<u>Main deck:</u> Double crew cabin, workshop, pantry and mess, sanitary space <u>Upper deck:</u> Captain's cabin, double crew cabin
Class	None
Remark	Vessel is old Damen stock, with almost brand-new engines and generator set and has recently been built up for the purpose of sale. The entire hull of the Vessel consists of container sized units. These container sized units are called Damen Modular Barges and can be coupled together in the water with a specially designed coupling system, called the Damen Link. Because of this modular system, the entire Vessel can be transported by ship, truck or train to her final place of destination and assembled locally.
Not yet installed	Sun shades, anti-theft cage over engines/generator set/separators, sunroof upper deck. Wood between push bows, 2x bollards, echo sounder, tire fenders.
Optional equipment	Fifi pump and monitors, cover strips between containers
Position	The Netherlands





DAMEN MODULAR PUSHER 1807 (NEW-OLD-STOCK)





DAMEN MODULAR PUSHER 1807 (NEW-OLD-STOCK)





DAMEN MODULAR PUSHER 1807 (NEW-OLD-STOCK)





DAMEN MODULAR PUSHER 1807 (NEW-OLD-STOCK)





DAMEN MODULAR PUSHER 1807 (NEW-OLD-STOCK)





DAMEN MODULAR PUSHER 1807 (NEW-OLD-STOCK)





DAMEN MODULAR PUSHER 1807 (NEW-OLD-STOCK)





DAMEN MODULAR PUSHER 1807 (NEW-OLD-STOCK)





DAMEN MODULAR PUSHER 1807 (NEW-OLD-STOCK)





DAMEN MODULAR PUSHER 1807 (NEW-OLD-STOCK)





DAMEN MODULAR PUSHER 1807 (NEW-OLD-STOCK)



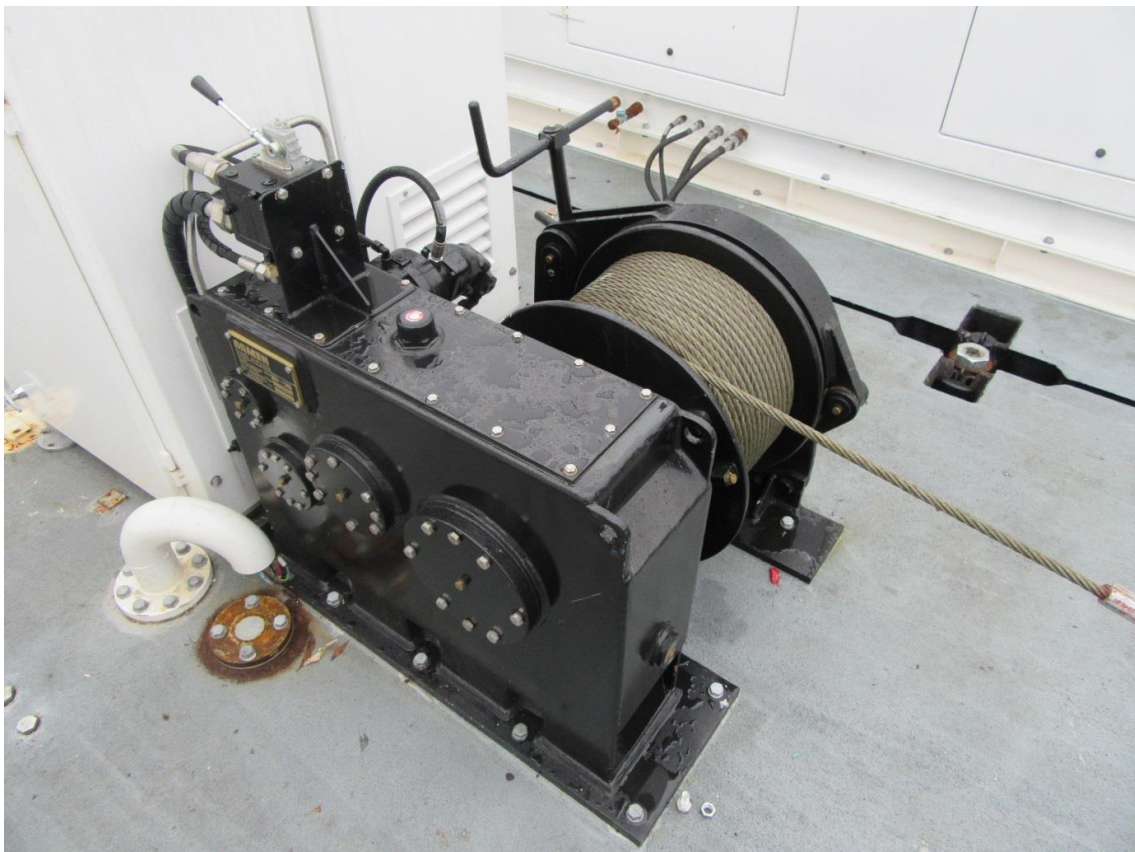


DAMEN MODULAR PUSHER 1807 (NEW-OLD-STOCK)





DAMEN MODULAR PUSHER 1807 (NEW-OLD-STOCK)



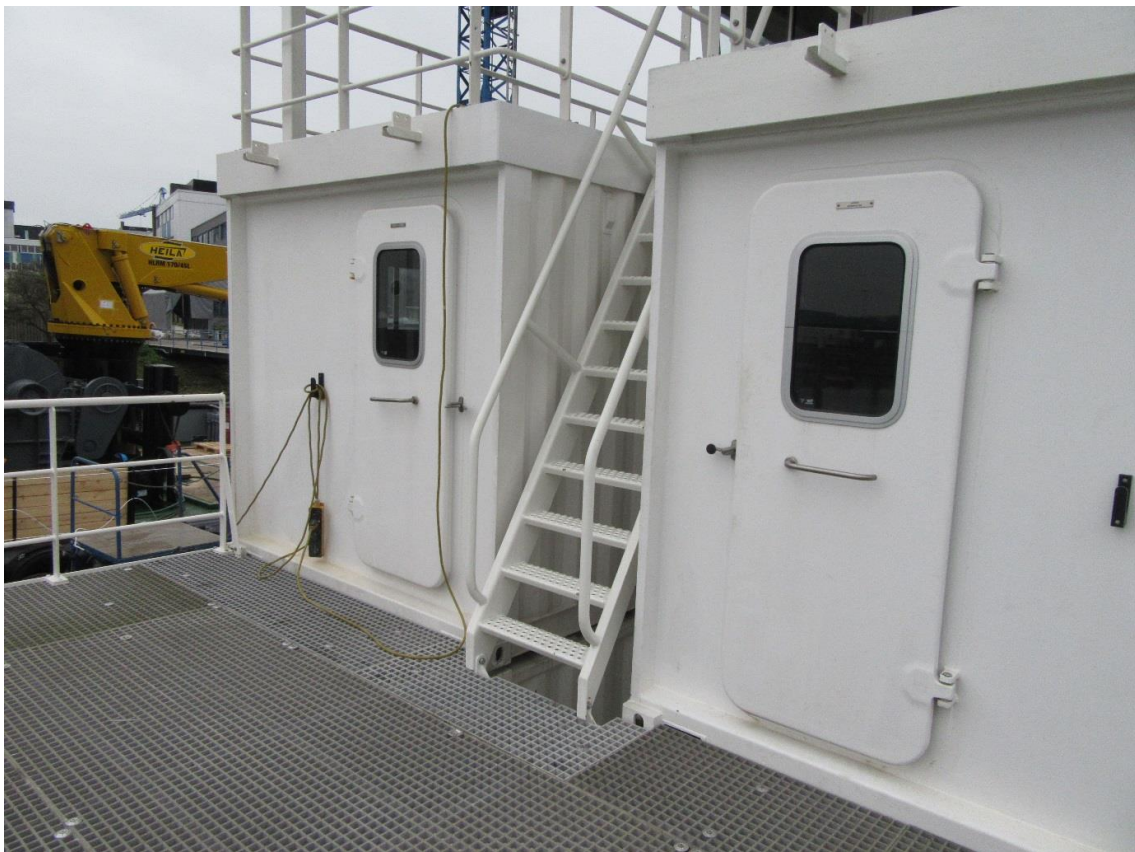


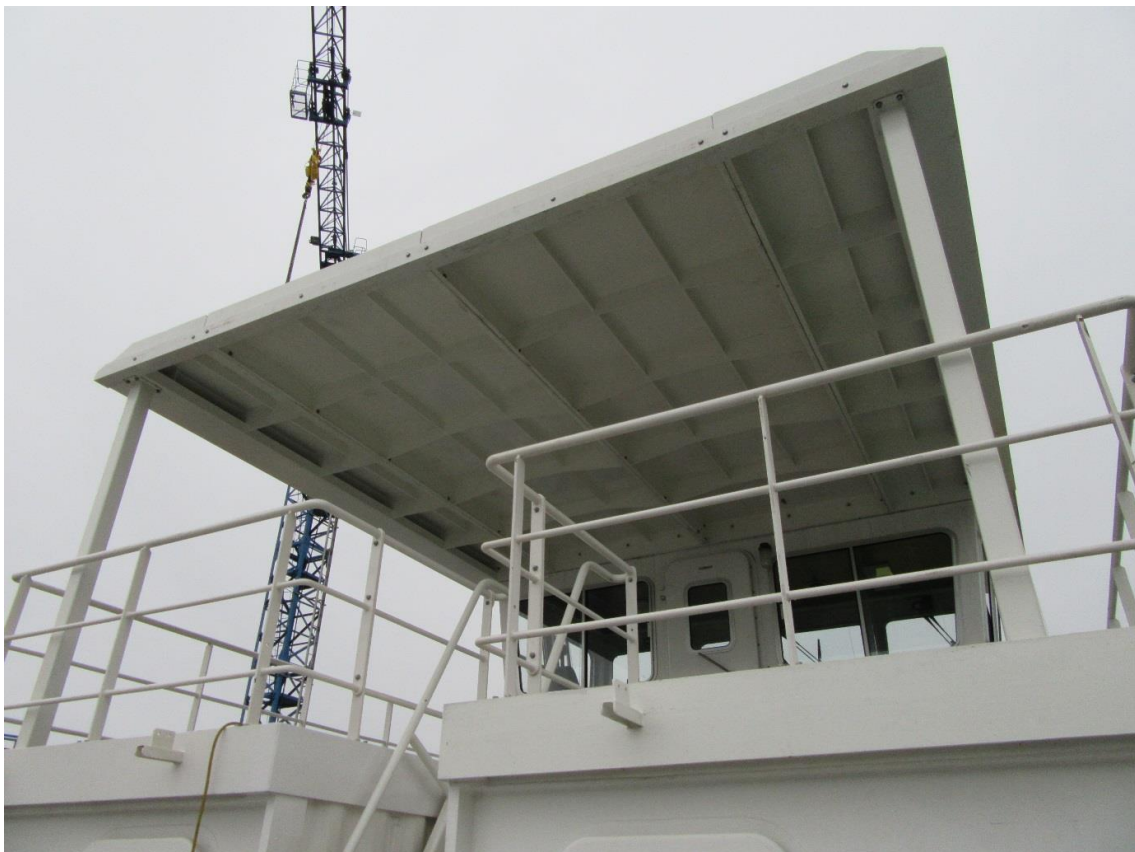
DAMEN MODULAR PUSHER 1807 (NEW-OLD-STOCK)





DAMEN MODULAR PUSHER 1807 (NEW-OLD-STOCK)





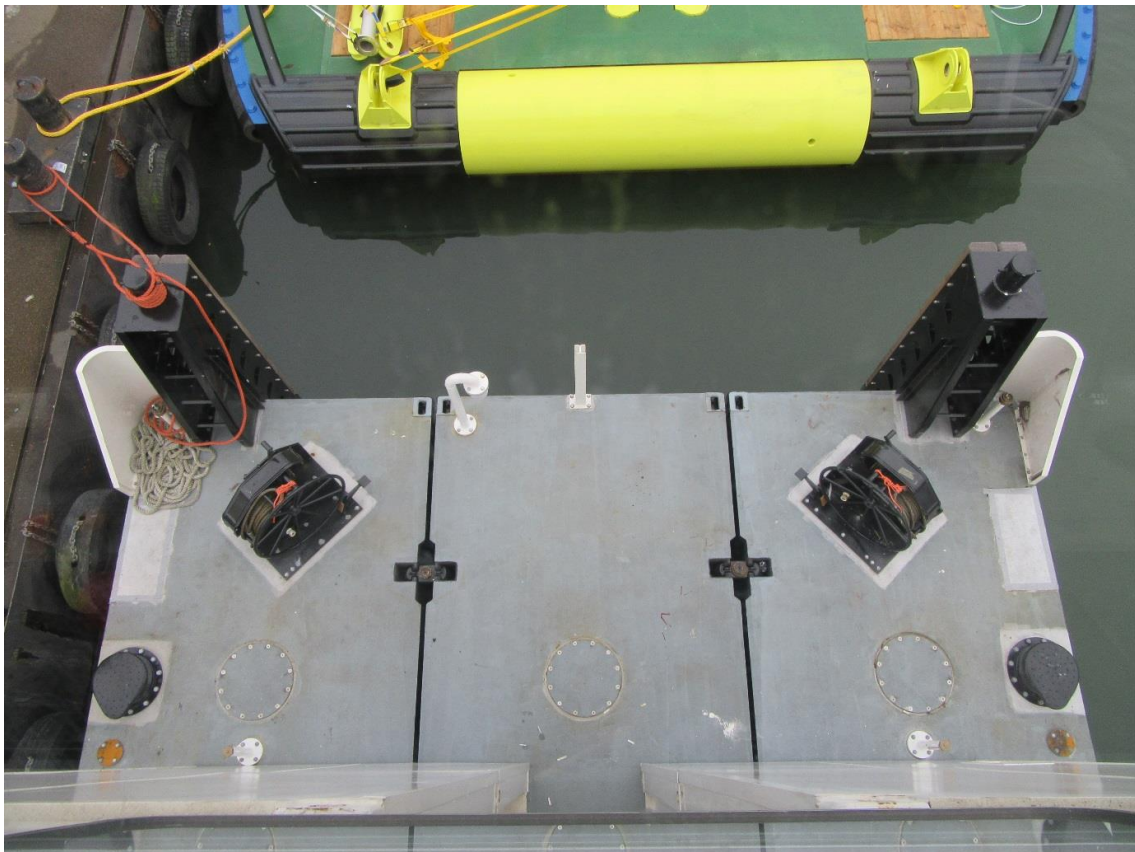


DAMEN MODULAR PUSHER 1807 (NEW-OLD-STOCK)





DAMEN MODULAR PUSHER 1807 (NEW-OLD-STOCK)





DAMEN MODULAR PUSHER 1807 (NEW-OLD-STOCK)





DAMEN MODULAR PUSHER 1807 (NEW-OLD-STOCK)





DAMEN MODULAR PUSHER 1807 (NEW-OLD-STOCK)





DAMEN MODULAR PUSHER 1807 (NEW-OLD-STOCK)





DAMEN MODULAR PUSHER 1807 (NEW-OLD-STOCK)





DAMEN MODULAR PUSHER 1807 (NEW-OLD-STOCK)





DAMEN MODULAR PUSHER 1807 (NEW-OLD-STOCK)





DAMEN MODULAR PUSHER 1807 (NEW-OLD-STOCK)





DAMEN MODULAR PUSHER 1807 (NEW-OLD-STOCK)





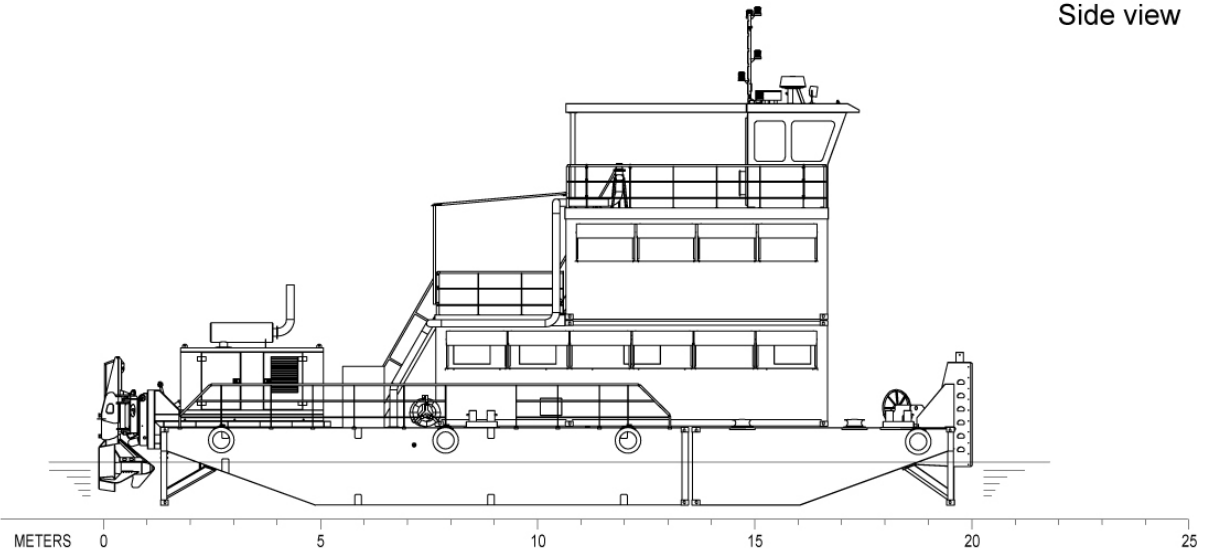
DAMEN MODULAR PUSHER 1807 (NEW-OLD-STOCK)



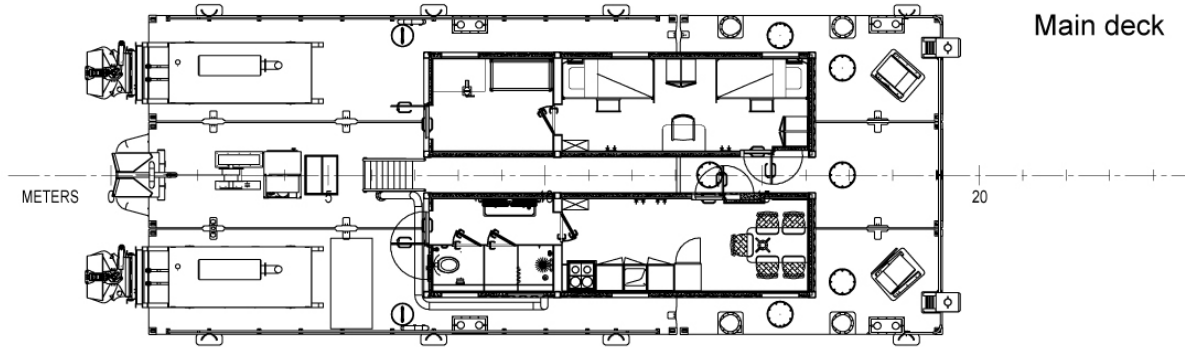


DAMEN MODULAR PUSHER 1807 (NEW-OLD-STOCK)

Side view

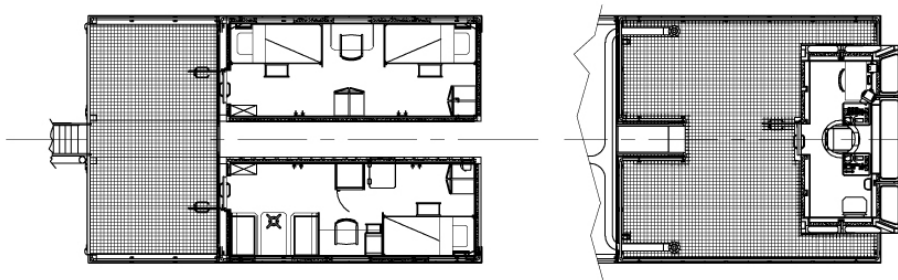


Main deck



First deck

Bridge deck



Please contact for more information: paul@jorenmarine.com * www.jorenmarine.com