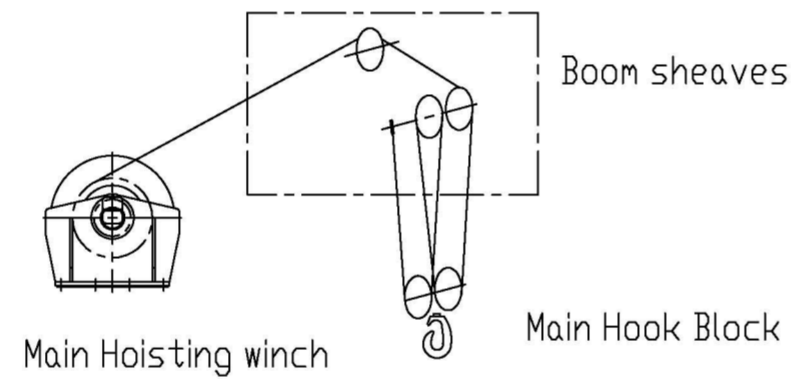
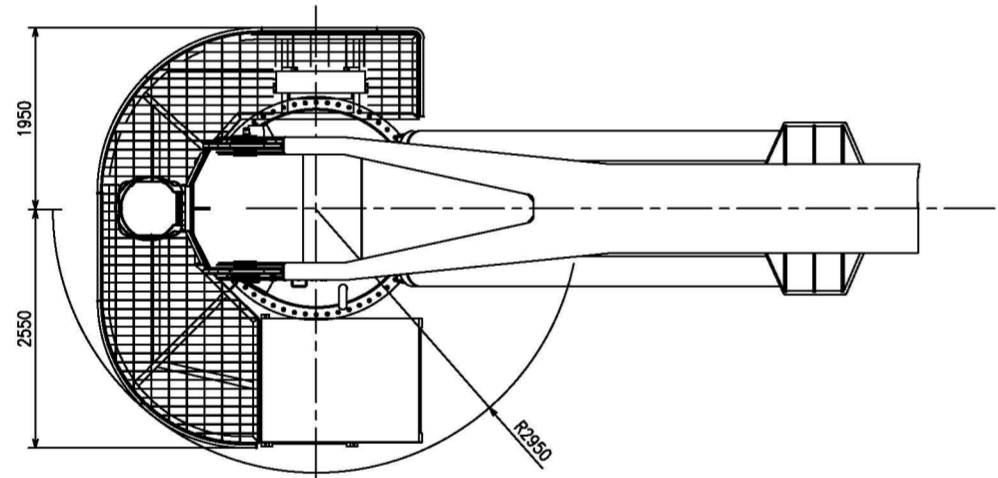
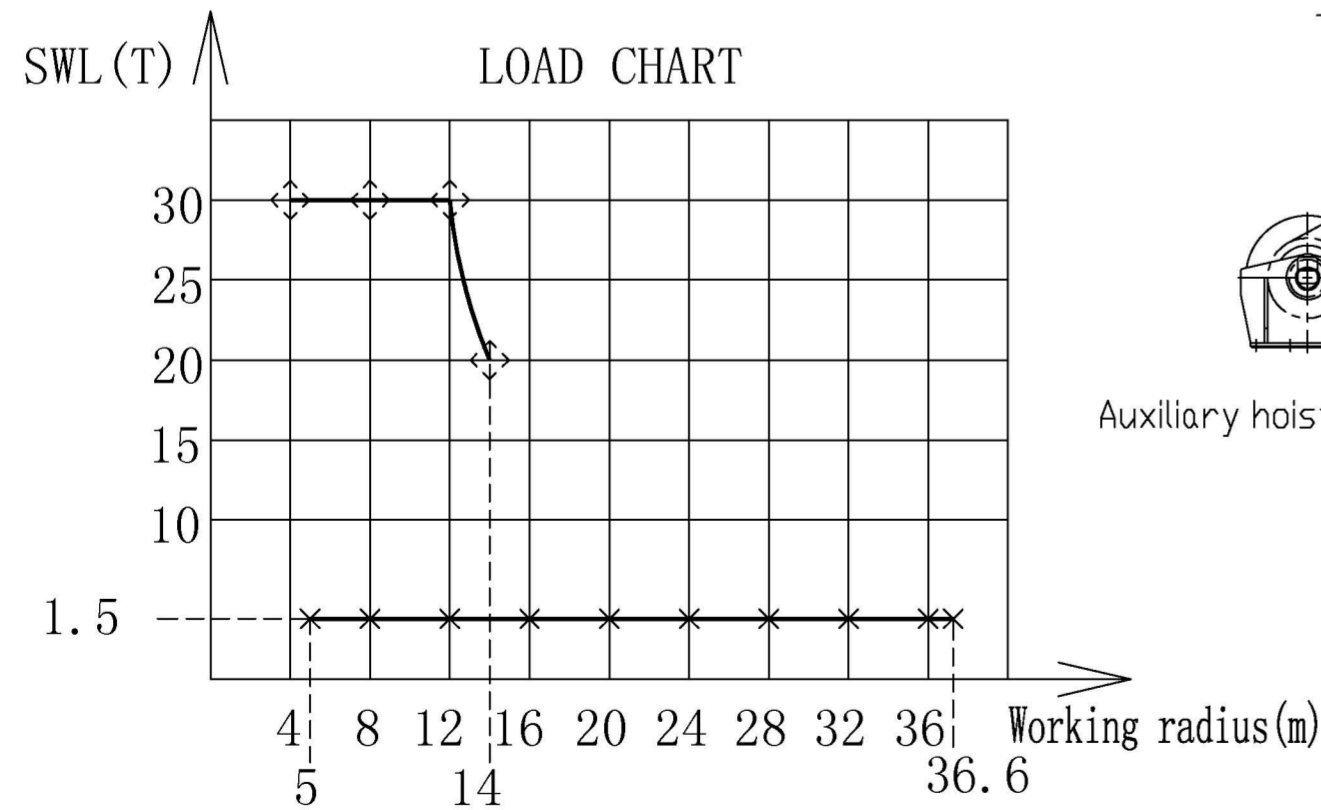
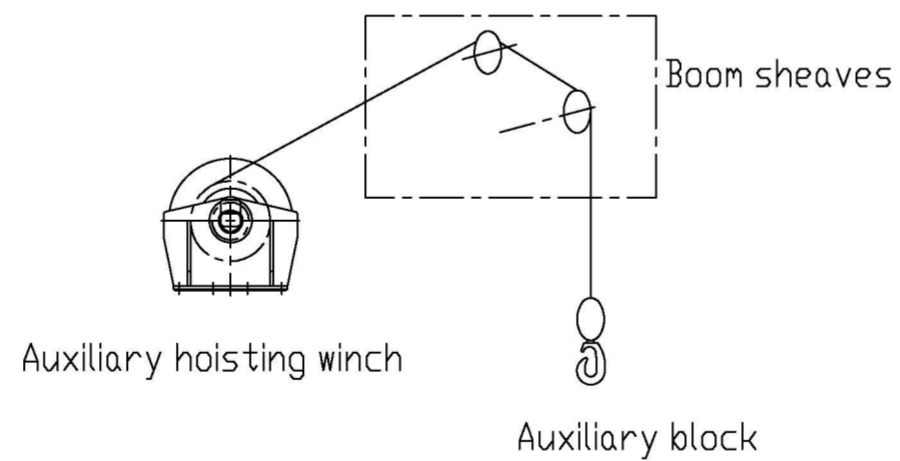


The electric box is installed under the deck IP44

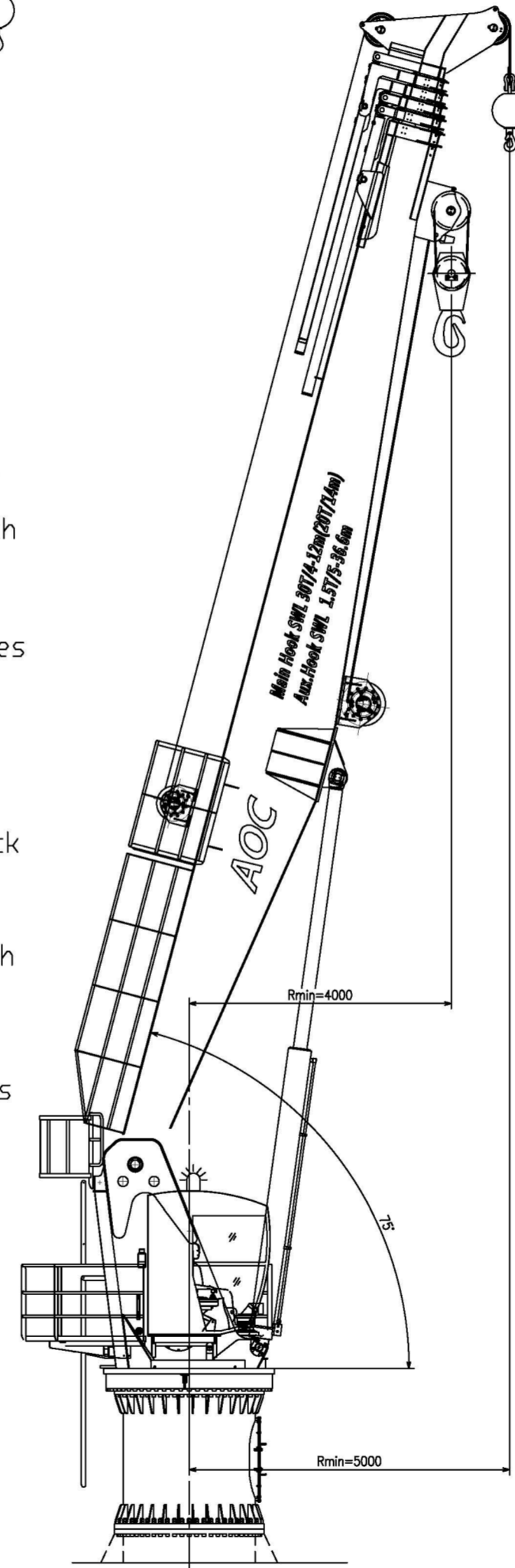
Reeving diagram of main hoisting winch



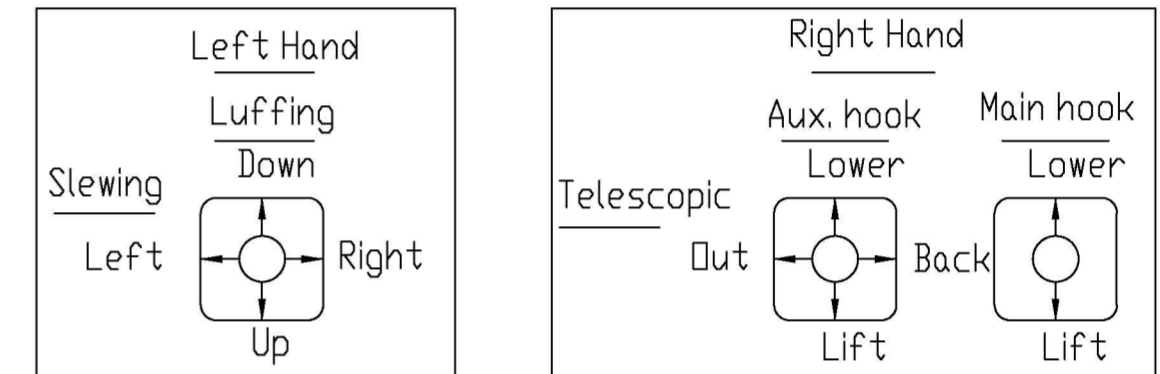
Reeving diagram of auxiliary hoisting winch



◆ Main Hook
 × Auxiliary hook



Crane control diagram



TECHNICAL PARAMETERS

1. SWL	See load chard
2. MAX. WORKING RADIUS	36.6m
3. MIN. WORKING RADIUS	4m
4. HOISTING SPEED	~10m/min(main hook) ~30m/min(AUX. hook)
5. HOISTING HEIGHT	30m
6. SLEWING SPEED	~0.5r/min
7. SLEWING ANGLE	360°
8. LUFFING TIME	~120S
9. WORKING CONDITION	
HEEL	≤5°
TRIM	≤2°
10. Sea state	2Grade(Hsig=0.5m)
11. ELEC. MOTOR	Y315M-4-H
POWER	132KW
SPEED	1480r/min
POWER RESOURCE	AC425V/50HZ
PROTECT CLASS	F
WORKING TYPE	S1
12. OIL FLOW	190L/min
13. DESINGE TEMP.	-9.9°~+50°