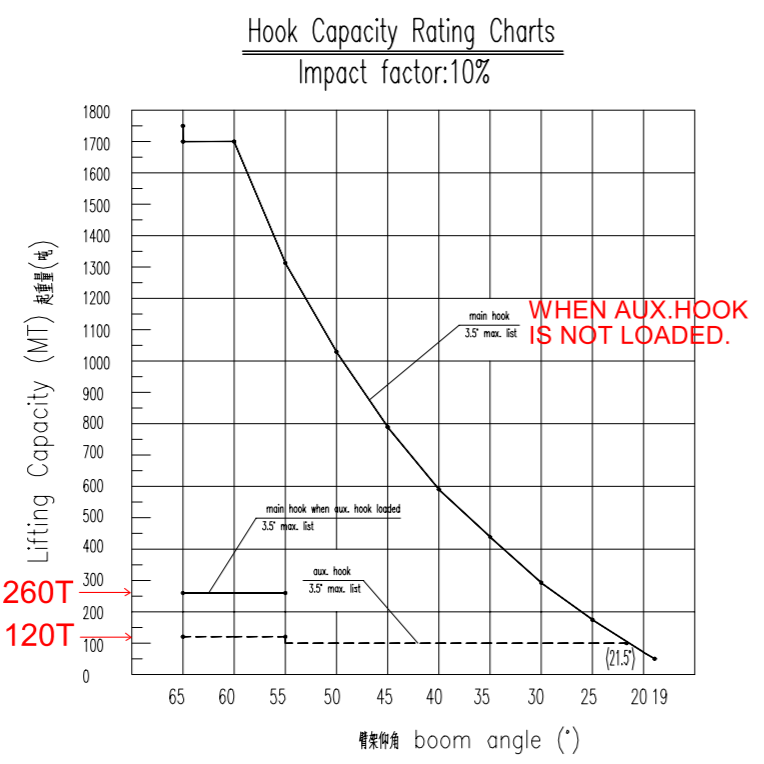


main hook	lifted load (mt)	1750 (double hooks)
	lifting height (m)	75 (above deck)
	average speed (m/min)	1 (full load) 8 (empty hook)
aux. hook	lifted load (mt)	120
	lifting height (m)	92 (above deck)
	average speed (m/min)	9 (full load) 18 (empty hook)
whip	lifted Load (mt)	10
	lifting Height (m)	90 (above deck)
boom hoist	speed (m/min)	30/60
	time from 19° to 65°	~75min
	range for loading	19°~65°
motor	boom angle for sailing	45°
	minimum Boom angle	19°
	main hook	300KWx2, 900/1611rpm
wire rope	boom hoist	300KWx2, 900rpm
	aux. hook	300KWx1, 900/1800rpm
	whip	150KWx1, 900/1800rpm
draft	main hook	IWRC 6xP.WS(36) φ47.5
	boom hoist	IWRC 6xP.WS(36) φ50
	aux. hook	none rotating φ33.5
service temperature	operation	approx. 3.5m
	navigation	approx. 3.0m
		-9.5°C ~ +40°C



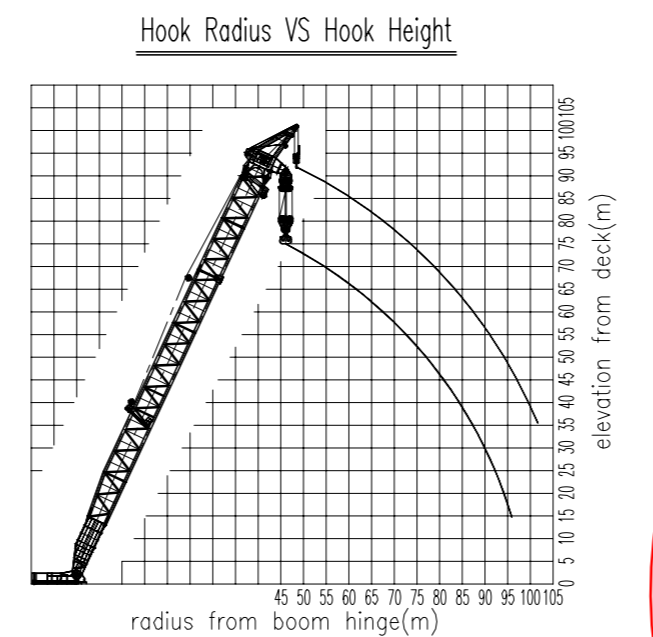
主钩起重参数表 main hook load table

boom angle (°)	1	2	3	4	5	6	7	8	9	10	11	12
load under hooks (mt)	1700	1700	1310	1020	780	590	430	290	170	65	45	1750
range from hinge (m)	46.1	53.6	60.8	67.5	73.7	79.3	84.3	88.7	92.4	95.4	95.9	46.1
lift height above deck (m)	75	70.7	65.7	60.1	53.9	47.2	40.1	32.5	24.6	16.4	14.8	75

副钩起重参数表 aux. hook load table*

boom angle (°)	1	2	3	4	5	6	7	8	9	10
load under hooks (mt)	120	120	120	100	100	100	100	100	100	100
range from hinge (m)	48.4	56.9	64.8	72.3	79.3	85.6	91.3	96.3	100.6	103.1
lift height above deck (m)	92.0	87.5	82.1	76.1	69.5	62.3	54.6	46.4	37.8	31.6

* main hook will be loaded no more than 260mt when auxiliary hook is operated with boom at 55 degrees or higher.



- NOTE:
1. THE HEAVY LIFTS ARE TO BE CARRIED OUT IN VERY MILD ENVIRONMENTAL CONDITIONS.
 2. 1750MT LIFT IS ONLY CARRIED OUT WHEN THE BOOM IS AT 65 DEGREES.
 3. THE LOAD DIRECTION OF TWO MAIN HOOKS IS TO BE ALWAYS BE PARALLEL WITH EACH OTHER DURING THE CRANE OPERATION.
 4. THE BOOM HINGES ARE TO BE FIXED AT FRAME NO. 51 OF THE BARGE WHEN THE CRANE IS OPERATED.
 5. THE BOOM HINGES ARE TO BE FIXED AT FRAME NO. 23 OF THE BARGE WHEN THE CRANE IS SOTWED.
 6. MAIN HOOK AND AUXILIARY HOOK ARE NOT TO BE WORKED AT THE SAME TIME EXCEPT AS DESCRIBED IN ITEM 7.
 7. MAIN HOOK TO BE LOADED WITH NO MORE THAN 260MT WHEN AUXILIARY HOOK IS OPERATED WITH BOOM AT 55 DEGREES OR HIGHER.

MINIMUM NOMINAL BREAKING STRENGTH OF THE WIRE ROPE IS 229.6T.

100T 主钩 aux. hook

10T 副钩 whip hook

MINIMUM NOMINAL BREAKING STRENGTH OF THE WIRE ROPE IS TO BE NOT LESS THAN 102.3T.

MINIMUM NOMINAL BREAKING STRENGTH OF THE WIRE ROPE IS 178T.

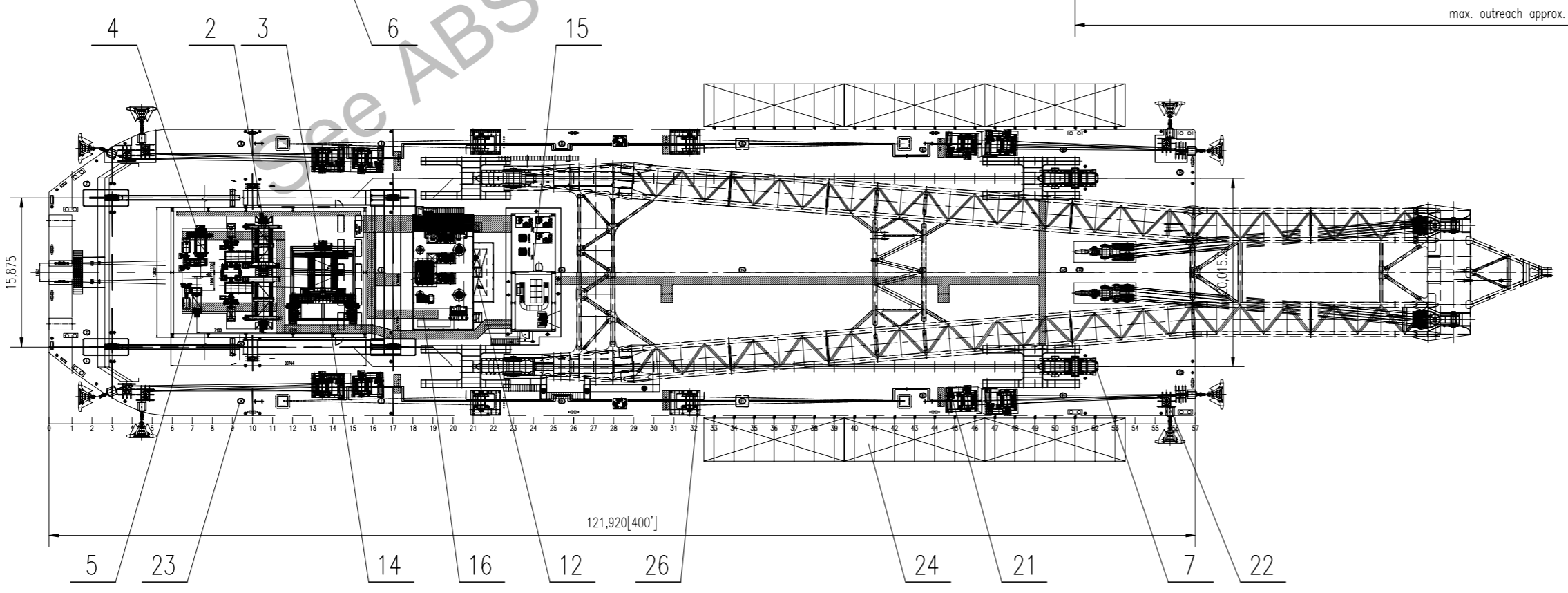
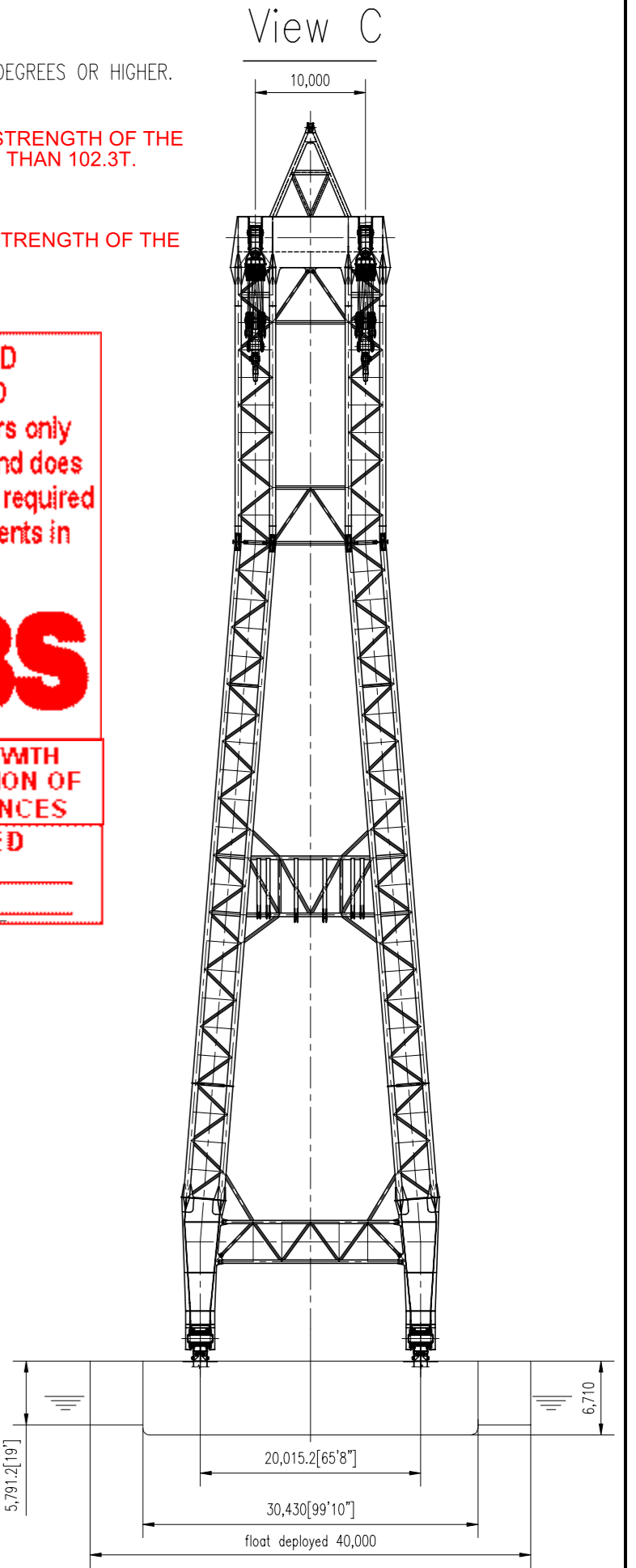
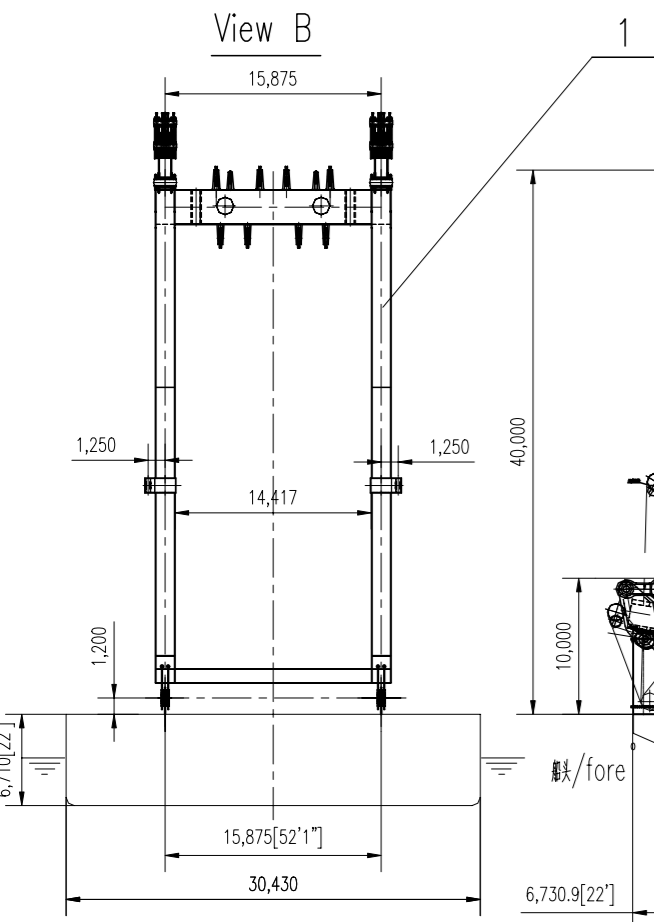
APPROVED AS AMENDED

This approval covers only ABS requirements and does not include items not required by ABS. See comments in ABS letter

ABS

IN ASSOCIATION WITH THE CERTIFICATION OF LIFTING APPLIANCES AS AMENDED

on page(s):



revision no.	sub. no.	description	date	signature
R2	FO0		2009.04.08	GHL
R1	FO0		2008.12.20	GHL
R0	FO0		2007.04.10	GHL

NO.	SUB-NO. or STDD	NAME & SIZE	MTRL or STYLE	QTY/set	each total WEIGHT	NOTE
PROJECT: 1700T ABF FLOATING CRANE			DESIGN STAGE:	SCALE: 1:400		
ITEM NAME: General Arrangement 起重機總圖			DRAW NO: F130000(1/2)	PROJ.		
DSGN		TRACE			APP.	
DRAW		CHCK			Q'TY/SET	
CHCK		VER.			SET/CRANE	