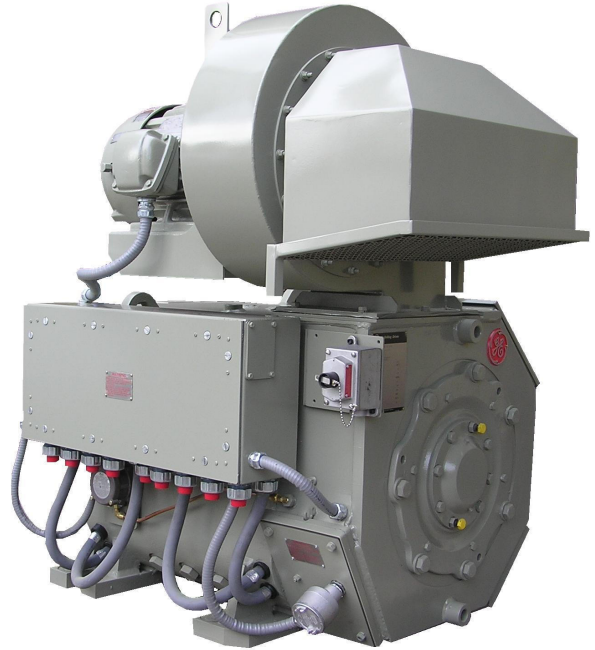




# 752™

## High-Torque DC drilling motor



### Performance ratings

The 752 High-Torque DC drilling motor with 2800 SCFM airflow and temperature rise of 155°C at 40°C ambient.

	Continuous Max. Hp	Drawworks Duty Cycle
<b>Shunt Wound</b>		
Volts (dc)	750	750
Arm amps	1185	1435
Field amps	60	60
RPM	1040	1065
Torque (lb ft)	5705	6745
<b>Hp</b>	<b>1130</b>	<b>1365</b>
<b>Series Wound</b>		
Volts (dc)	750	750
Arm amps	1150	1400
RPM	965	920
Torque (lb ft)	5900	7530
<b>Hp</b>	<b>1085</b>	<b>1320</b>

### Standard features

Class H insulation  
 Single shaft extension with hub  
 Pressurized connection box with double bolt-on cable connections and terminations for motor auxiliaries  
 Space heater.  
 Auxiliary lockout switch  
 Pressure sensor.  
 Blower assembly with 10 Hp motor

#### Marine models also include:

Two 100 Ohm platinum RTDs  
 ABS certified shaft.  
 Armored cable.

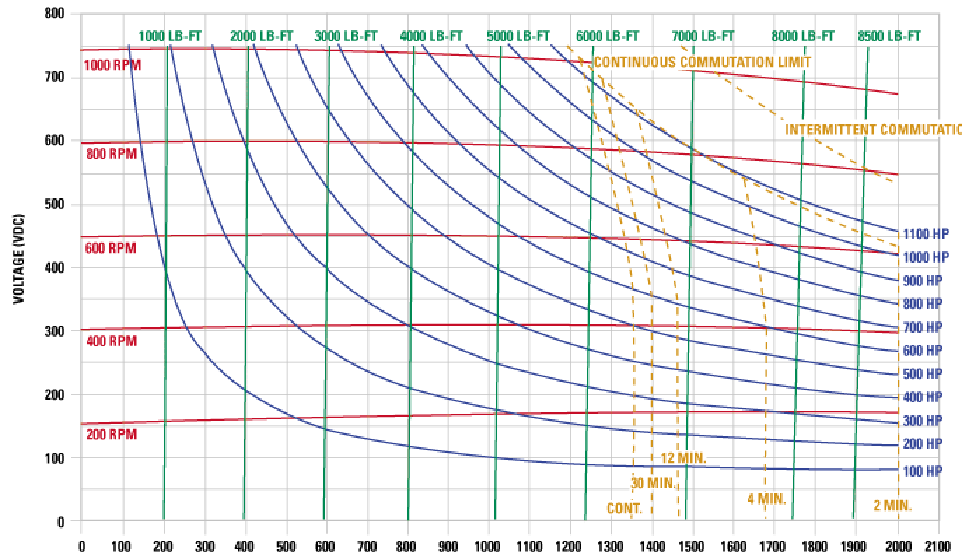
### Optional features:

Plug-in connectors  
 Encoder  
 ABS certification  
 Closed loop cooling  
 15 Hp blower assembly

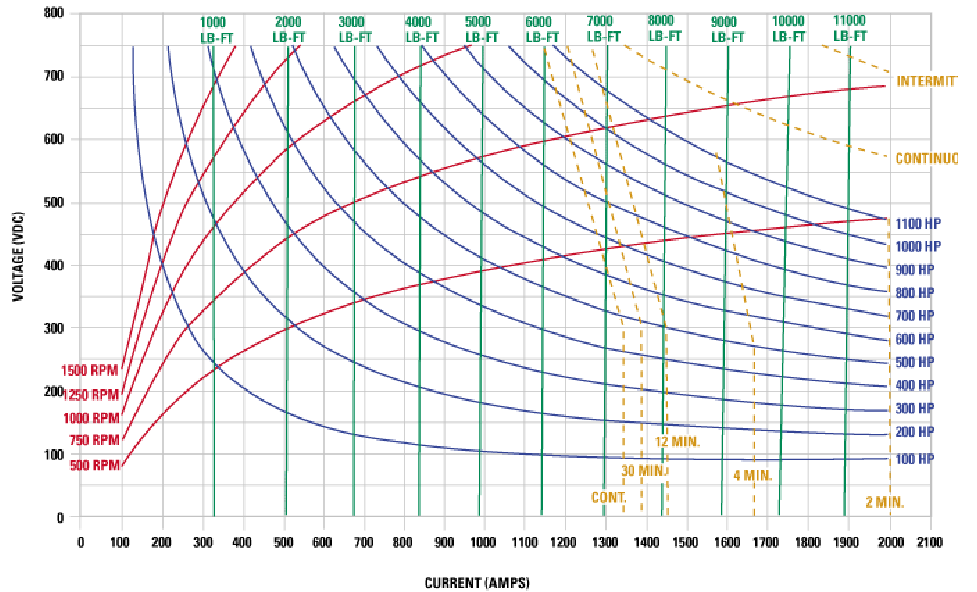
SS connection box  
 Spark arrester  
 Noise attenuation  
 Intake air filter



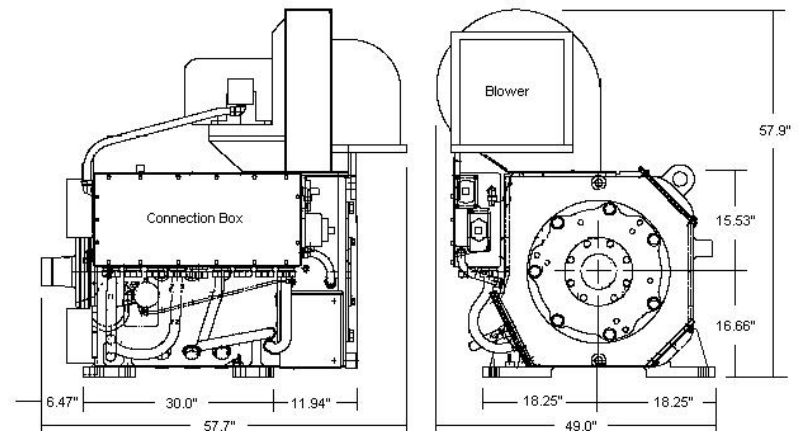
GE752 shunt wound drilling motor  
60 amp field at 2800 scfm ventilation



GE752 series wound drilling motor  
at 2800 scfm ventilation



Approximate Weight: 7200 lbs.



Dimensions are approximate. Not for construction.



imagination at work